



# SPECIFICATIONS

Model No.

YD4020

Page

1/5

## 1. ELECTRICAL AND ACOUSTICAL SPECIFICATION

Item		Specifications
1-1	<b>Dimension</b>	40×20×T5.8
1-2	<b>Rated Input Power</b>	0.5W
1-3	<b>Max Input Power</b>	1W (white noise / 1 min)
1-4	<b>Nominal Impedance</b>	8±15% (AT 1kHz 1Vrms sine wave)
1-5	<b>Resonance Frequency(f0)</b>	550±20%Hz (Without baffle)
1-6	<b>Sound Pressure Level</b>	88±3 dBat 0.1W/0.1m With baffle0.8KHz、1KHz、1.2KHz、1.5KHz ( AVE )
1-7	<b>Frequency Range</b>	FoHz ~ 20kHz (Application: full audible signals)
1-8	<b>NON-LINEAL Distortion Factor</b>	Less than max 10% (1kHz /1.0V, sine wave)
1-9	<b>Polarity</b>	When a positive DC Current is applied to the voice coil terminal marked +or red ,the diaphrag shall move forward
1-10	<b>OperationTest</b>	Must be normal at sine wave and program source2.0W.
1-11	<b>Buzz,Rattle,etc.</b>	Should not be audible at 4.0 V sine wave between (f0 Hz ~ 20000Hz)
1-12	<b>Storage Temp Range</b>	-40℃ ~ +85℃
1-13	<b>Appearance</b>	Should not exist any obstacle to be harmful to normal operation;damages,cracks,rusts and distortions,etc.

Issue No	Description	Date	Issue	Check	Approval



# SPECIFICATIONS

Model No.

YD4020

Page

2/5

## 2.ENVIRONMENTAL TEST

Item		Specifications
2-1	<b>High temp. Test</b>	Precondition at +25°C for 1 hour. Then expose to +85°C ,duration 96 hours duration of recovery 2 hours.
2-2	<b>Low temp. Test</b>	Precondition at +25°C for 1 hour. Then expose to -40°C ,duration 96 hours duration of recovery 2 hours.
2-3	<b>Humidity test</b>	70°C,85%RH,48 hours, Duration of recovery: 2hrs of conditions at 20°C.
2-4	<b>Thermal cycle test.</b>	Each temperature cycle shall consist of 2 hours at +25°C followed by 2 hours at +85°C, and followed by 2 hours at -20°C with a 20 to 40 minutes transition time between each 2 temperature extremes. The test duration is for 10 cycles.
2-5	<b>Vibration</b>	10~55~10Hz sin-wave sweep 15min. 5G(constant) X,Y, Z 3 direction. 2 hours each, total 6 hours.
2-6	<b>Drop test</b>	Standard packaging from 1.5m(on the concrete 1 corner, 3sides, 6 plain)
2-7	<b>Load test</b>	Rated Power white noise is applied for 96 hours
2-8	<b>Max Power test</b>	White noise (EIA filter) for 96 hours @2.0 W (4V) input power.
2-9	<b>Terminal strength test</b>	Capable of withstand 1kg load for 15seconds without resulting in any damage or rejection.

### PASS CRITERION :

After these test , the change of S.P.L shall be within  $\pm 3$  dB .

Issue No	Description	Date	Issue	Check	Approval

<h1>SPECIFICATIONS</h1>	Model No.	YD4020
	Page	3/5

### 3.MEASURING METHOD

#### 3-1 . Test Method:

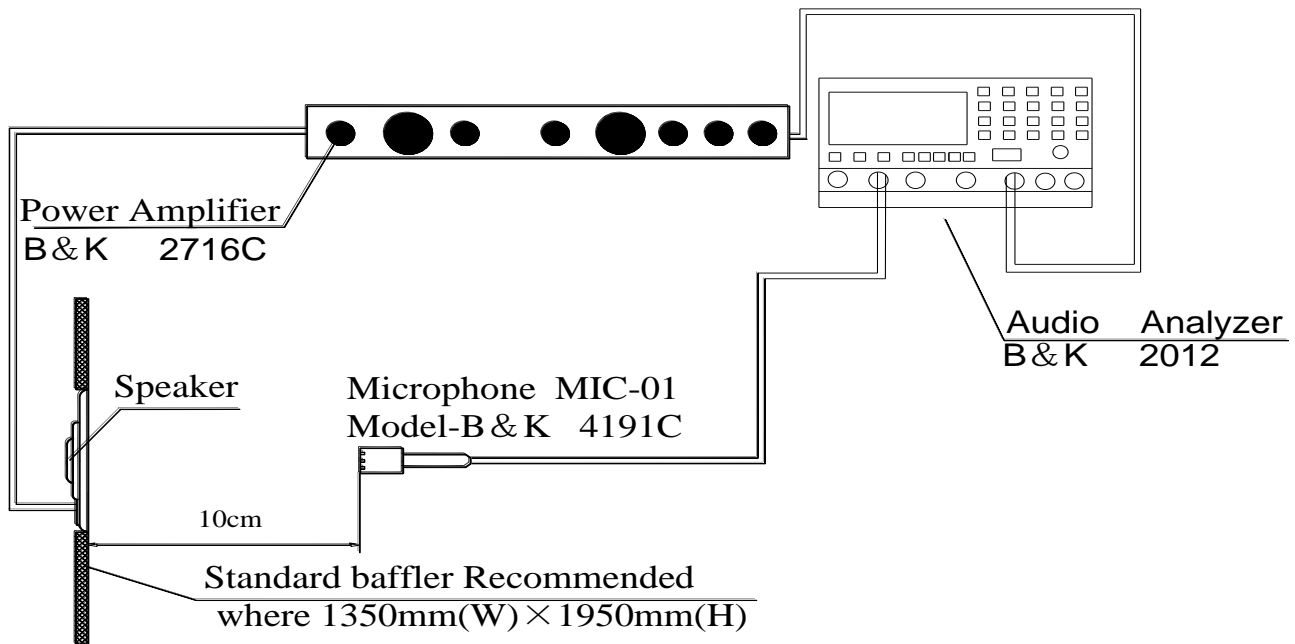
Sound pressure level reference : 0db=20ubar

Measuring distance: 0.1M/Axis Relative humidity : 0.1M/Axis

Apply power : 0.1W/0.89V(Sine wave)

Frequency sweep range : 100Hz-20KHz Sweep rate 1/12 Octave

Test condition : 23°C to 25°C/Relative humidity 55% Max



Issue No	Description	Date	Zhang cai xia Issue	Xing pin Check	Tang he lin Approval



# SPECIFICATIONS

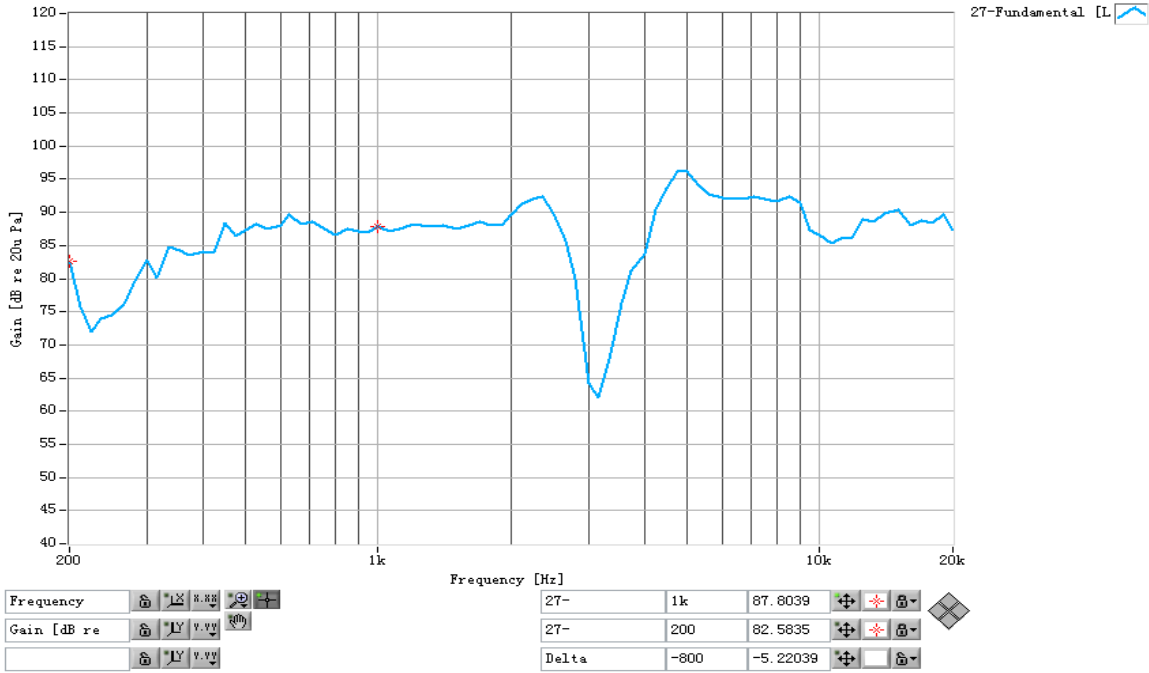
Model No.

YD4020

Page

4/5

## 4.FREQUENCY RESPONSE CURVE



Issue No	Description	Date	Issue	Check	Approval

# SPECIFICATIONS

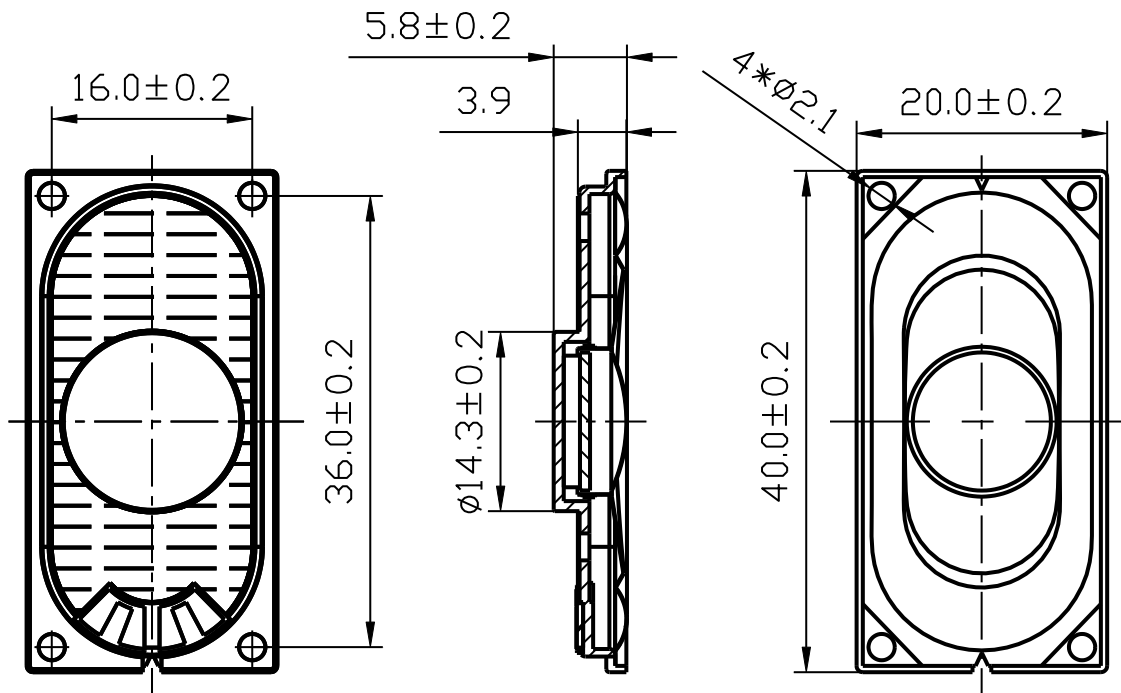
Model No.

YD4020

Page

5/5

## 5.DIMENSIONS



Issue No	Description	Date	Issue	Check	Approval

# SPECIFICATIONS

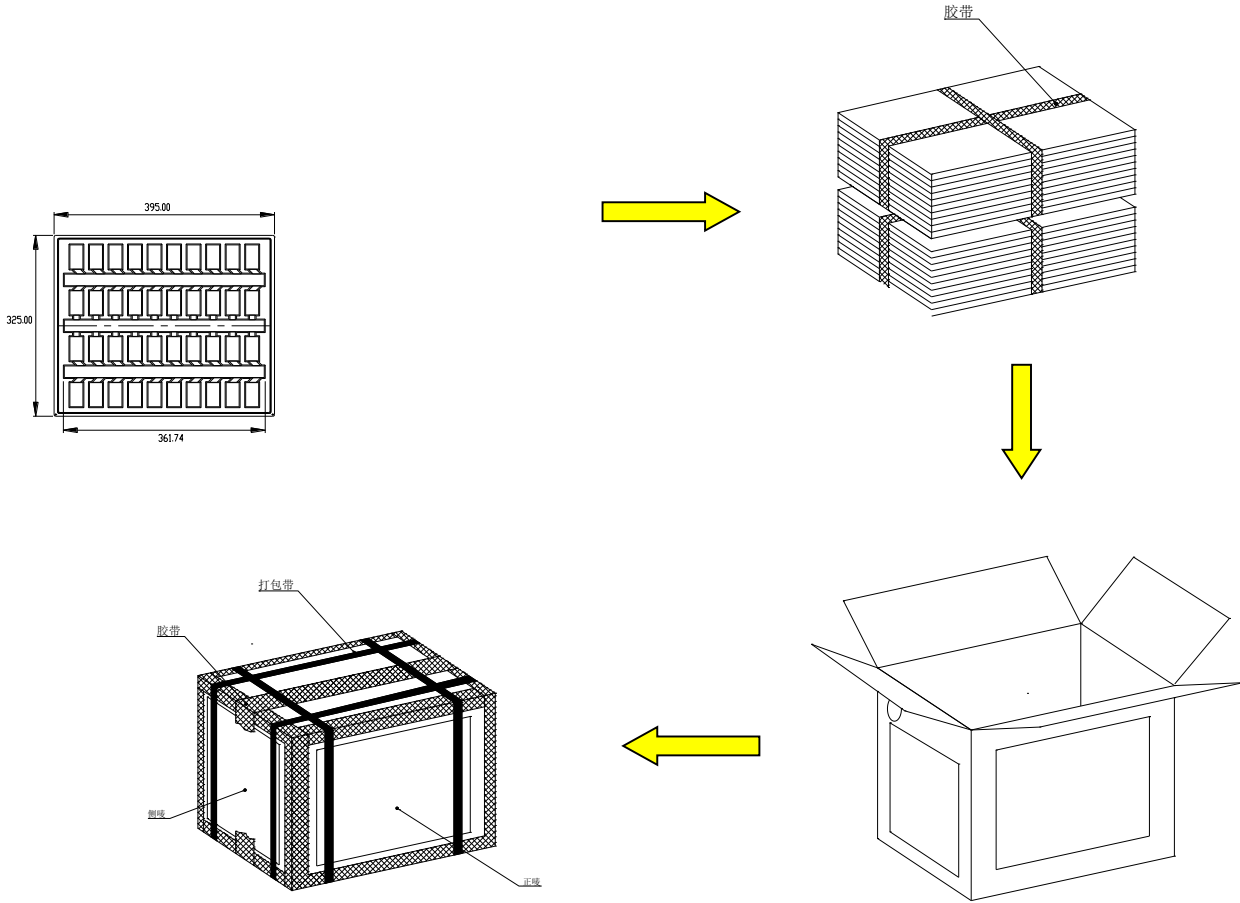
Model No.

YD4020

Page

6/6

## 6. PACKING



注:

- 1.每一吸塑盒装 40PCS.
- 2.每一外箱装 25 层 1000PCS
- 3.外箱尺寸 415×340×20.5 CM

Issue No	scription	Date	Issue	Check	Approval
----------	-----------	------	-------	-------	----------