

SPECIFICATIONS SHEET FOR APPROVAL

SMD SPEAKER
P/N: MSS15A080PM8

**DESCRIPTION: L15mm, D15mm, H4.0mm SMD Speaker, 800Hz,80hm,
0.5W, RoHS Compliance (Directive 2002/95/EC)**

VERSION: 01

DATE: 30-Sep-2011

REVISIONS

| VERSION | DESCRIPTION | DATE |
|----------------|---------------------------|-------------|
| 01 | Released from engineering | 30-Sep-11 |
| | | |
| | | |
| | | |
| | | |

APPROVED BY :

CUSTOMER NAME :

DATE :

SPECIFICATIONS SHEET

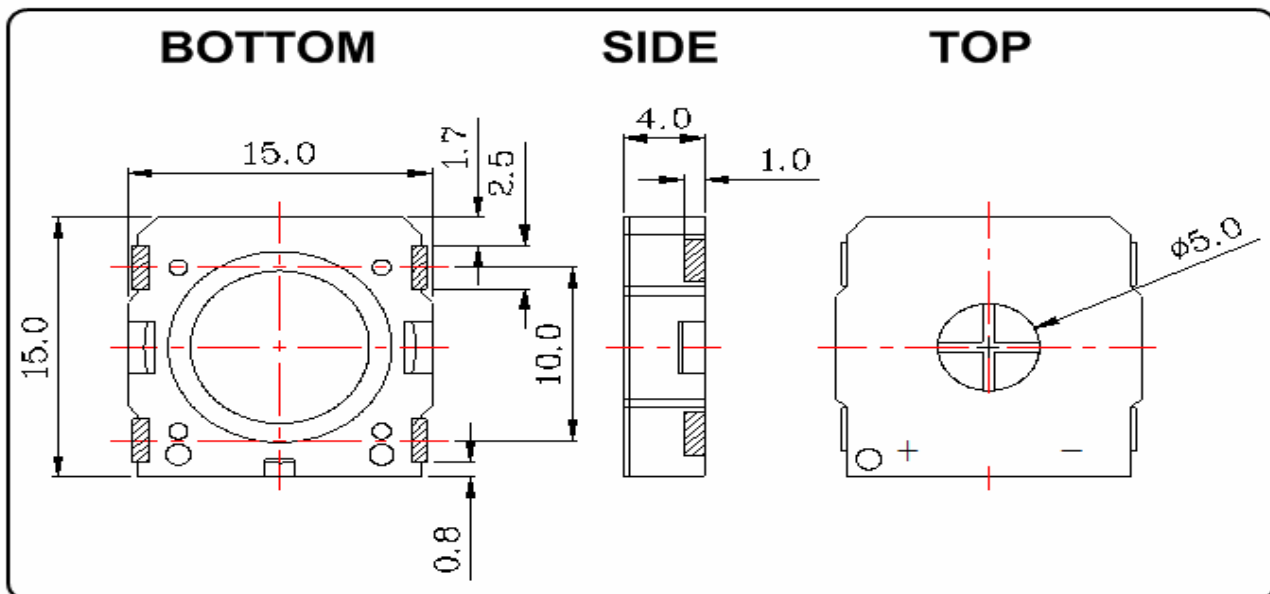
SMD SPEAKER
P/N: MSS15A080PM8

1. SPECIFICATIONS

| PARAMETERS | VALUES | UNITS |
|--------------------------|-------------------|-------|
| *SOUND PRESSURE LEVEL | 87 ± 3 | dBA |
| RESONANCE FREQUENCY (Fo) | 800 ± 20% | Hz |
| FREQUENCY RANGE | Fo – 20,000 | Hz |
| RATED IMPEDANCE | 8 ± 15% | Ohm |
| RATED POWER | 0.5 | W |
| MAX POWER | 0.8 | W |
| OPERATING TEMPERATURE | -30 to +85 | °C |
| STORAGE TEMPERATURE | -40 to +85 | °C |
| MAGNET | SMCO 6.7*1.1mm | - |
| HOUSING MATERIAL | LCP | - |
| CONE MATERIAL | KAPTON | - |
| TERMINAL MATERIAL | Tin plated copper | - |
| WEIGHT | 1.5 | g |

*Tested at 0.1m 0.5W 1k, 1.6k, 2k, 3.2kHz Average

2. DIMENSIONS (unit in mm)



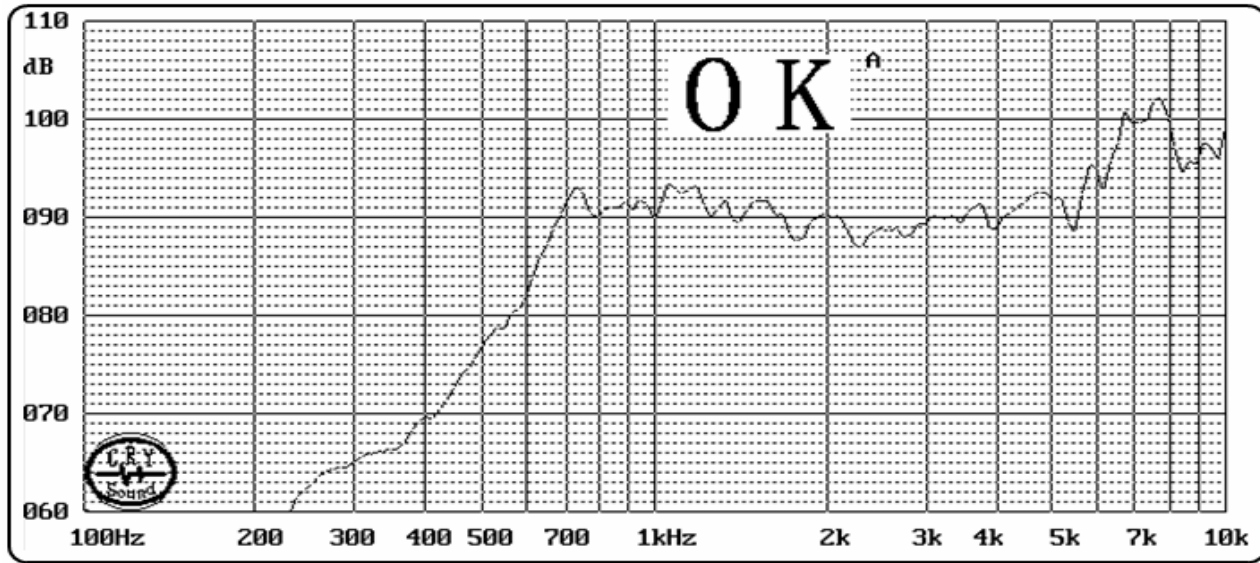
Tolerance: ±0.5mm except specified

VERSION: 01

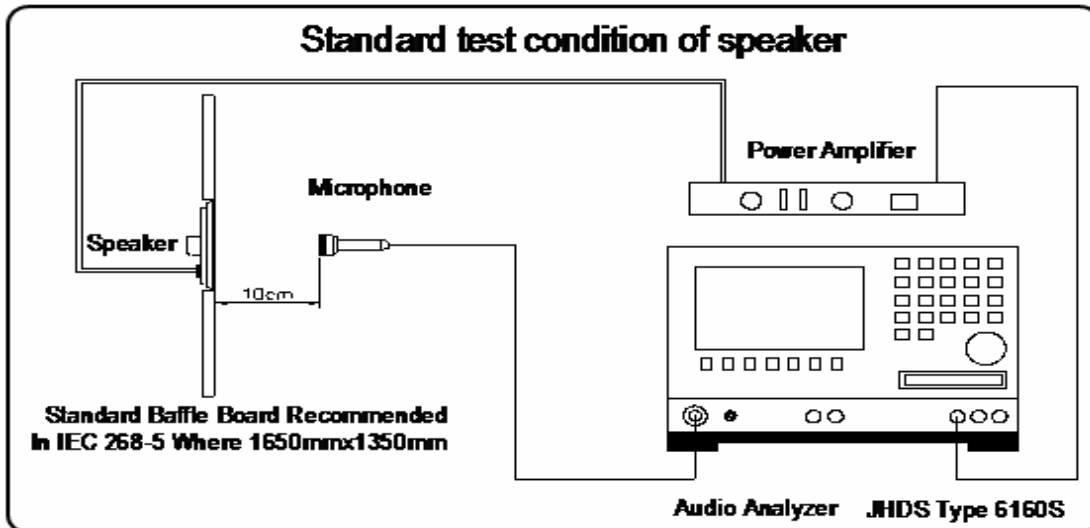
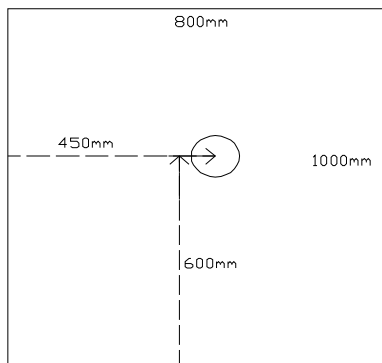
DATE: 30-Sep-2011

All specifications subject to change without notice

3. FREQUENCY RESPONSE CURVE



4. MEASURING CONDITION



VERSION: 01

DATE: 30-Sep-2011

All specifications subject to change without notice

5. RELIABILITY TEST

(Criteria : After these test , the change of S.P.L shall be within ± 3 dB)

1) Load Test

Rated Power White noise is applied for 96 hours

2) Temperature Test

Keep 96 hours at $+85^{\circ}\text{C} \pm 3^{\circ}\text{C}$ and leave 3 hours in normal temperature and then check

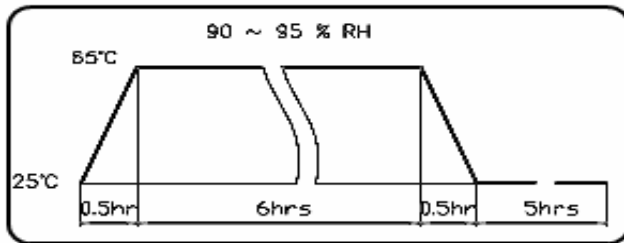
Keep 96 hours at $-40^{\circ}\text{C} \pm 3^{\circ}\text{C}$ and leave 3 hours in normal temperature and then check

3) Humidity Test

Keep 96 hours at $+ 40^{\circ}\text{C} \pm 3^{\circ}\text{C}$ relative humidity 92-95% and leave 3 hours in normal temperature and then checked.

4) Temp./Humidity Cycle Test

The part shall be subjected 5 cycles. One cycle shall be 12 hours and consist of;



5) Thermal cycle test.

Low temperature: $-40^{\circ}\text{C} \pm 3^{\circ}\text{C}$, temperature: $+85^{\circ}\text{C} \pm 3^{\circ}\text{C}$, cycle:

1 hour/cycle each, and then keep 5 cycles in a room.

6) Vibration Test

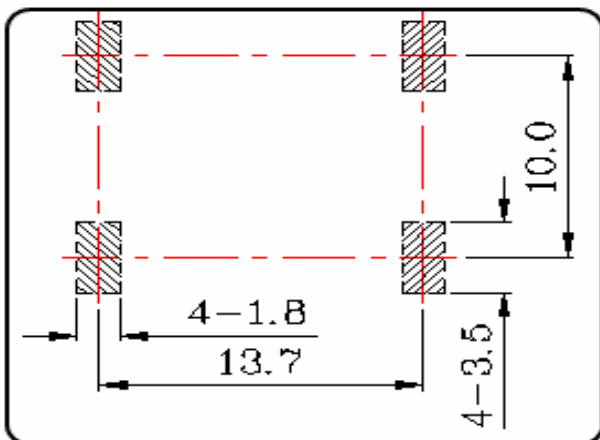
10~55~10Hz sin-wave sweep 15min. 5G(constant)

X,Y, Z 3 direction. 2 hours each, total 6 hours.

7) Drop Test

Free drop from 100cm height to the concrete floor X,Y, Z 6 direction. 1 times each, total 6 times.

6. RECOMMENDED LAND PATTERN



VERSION: 01

DATE: 30-Sep-2011

All specifications subject to change without notice

CopyRight © 2012 Sound Components Limited

Page 4 of 4