

## Base strip - MC 1,5/ 2-G-3,81 - 1803277

Please be informed that the data shown in this PDF Document is generated from our Online Catalog. Please find the complete data in the user's documentation. Our General Terms of Use for Downloads are valid (<http://phoenixcontact.com/download>)

Header, Nominal current: 8 A, Rated voltage (III/2): 160 V, Number of positions: 2, Pitch: 3.81 mm, Color: green, Contact surface: Tin, Mounting: Soldering




The figure shows a 10-position version of the product

### Product Features

- Versions with engagement noses for locking plugs with self-locking flanges
- Low-profile pin strips with compact pitches
- Plug-in direction parallel and vertical to the PCB
- Individual position coding by inserting coding profiles



### Key commercial data

|                                      |   |
|--------------------------------------|---|
| Packing unit                         | 1 pc  |
| GTIN                                 | <br>4 017918 045586 |
| Weight per Piece (excluding packing) | 0.64 GRM  |
| Custom tariff number                 | 85366990  |
| Country of origin                    | Germany   |

### Technical data

#### Dimensions

|                |              |
|----------------|--------------|
| Length         | 9.2 mm       |
| Pitch          | 3.81 mm      |
| Dimension a    | 3.81 mm      |
| Pin dimensions | 0,8 x 0,8 mm |
| Hole diameter  | 1.2 mm       |

#### General

## Base strip - MC 1,5/ 2-G-3,81 - 1803277

### Technical data

#### General

|   |              |
|---|--------------|
| Range of articles                       | MC 1,5/...-G |
| Insulating material group               | IIIa         |
| Rated surge voltage (III/3)             | 2.5 kV       |
| Rated surge voltage (III/2)             | 2.5 kV       |
| Rated surge voltage (II/2)              | 2.5 kV       |
| Rated voltage (III/3)                   | 160 V        |
| Rated voltage (III/2)                   | 160 V        |
| Rated voltage (II/2)                    | 250 V        |
| Connection in acc. with standard        | EN-VDE       |
| Nominal current $I_N$                   | 8 A          |
| Maximum load current                    | 8 A          |
| Insulating material                     | PBT          |
| Inflammability class according to UL 94 | V0           |
| Color                                   | green        |
| Number of positions                     | 2            |

### Classifications

#### eCl@ss

|            |          |
|------------|----------|
| eCl@ss 4.0 | 272607xx |
| eCl@ss 4.1 | 27260701 |
| eCl@ss 5.0 | 27260701 |
| eCl@ss 5.1 | 27260701 |
| eCl@ss 6.0 | 27260704 |
| eCl@ss 7.0 | 27440402 |
| eCl@ss 8.0 | 27440402 |

#### ETIM

|          |          |
|----------|----------|
| ETIM 3.0 | EC001121 |
| ETIM 4.0 | EC002637 |
| ETIM 5.0 | EC002637 |

#### UNSPSC

|               |          |
|---------------|----------|
| UNSPSC 6.01   | 30211810 |
| UNSPSC 7.0901 | 39121409 |
| UNSPSC 11     | 39121409 |
| UNSPSC 12.01  | 39121409 |
| UNSPSC 13.2   | 39121409 |

# Base strip - MC 1,5/ 2-G-3,81 - 1803277

## Approvals

### Approvals

---

#### Approvals

CSA / UL Recognized / VDE Gutachten mit Fertigungsüberwachung / cUL Recognized / IEC60335 CB Scheme / CCA / EAC / cULus Recognized

---


#### Ex Approvals


---


#### Approvals submitted

---

## Approval details

|  |       |       |
|--|-------|-------|
| CSA  |       |       |
|  | B     | D     |
| Nominal current I <sub>N</sub>   | 8 A   | 8 A   |
| Nominal voltage U <sub>N</sub>   | 300 V | 300 V |

|   |       |       |
|---|-------|-------|
| UL Recognized  |       |       |
|   | B     | D     |
| Nominal current I <sub>N</sub>  | 8 A   | 8 A   |
| Nominal voltage U <sub>N</sub>  | 300 V | 300 V |

|   |       |
|---|-------|
| VDE Gutachten mit Fertigungsüberwachung  |       |
| Nominal current I <sub>N</sub>  | 8 A   |
| Nominal voltage U <sub>N</sub>  | 160 V |

# Base strip - MC 1,5/ 2-G-3,81 - 1803277

## Approvals

cUL Recognized

|                       | B     | D     |
|-----------------------|-------|-------|
| Nominal current $I_N$ | 8 A   | 8 A   |
| Nominal voltage $U_N$ | 300 V | 300 V |

IECEE CB Scheme

|                       |       |
|-----------------------|-------|
| Nominal current $I_N$ | 8 A   |
| Nominal voltage $U_N$ | 160 V |

CCA

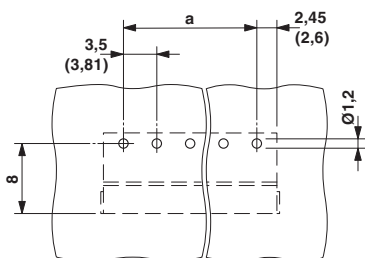
|                       |       |
|-----------------------|-------|
| Nominal current $I_N$ | 8 A   |
| Nominal voltage $U_N$ | 160 V |

EAC

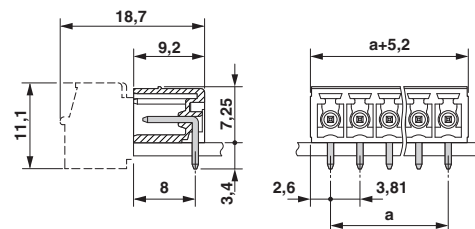
cULus Recognized

## Drawings

Drilling diagram

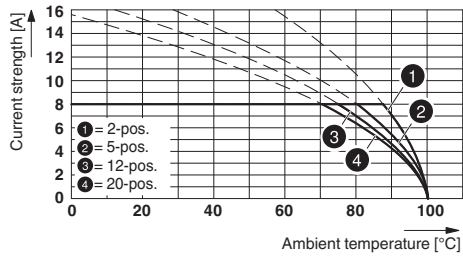


Dimensioned drawing



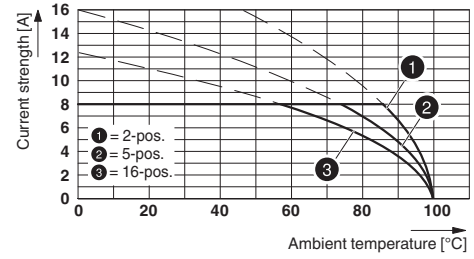
## Base strip - MC 1,5/ 2-G-3,81 - 1803277

Diagram



Type: MC 1,5/...-ST-3,81 with MC 1,5/...-G-3,81

Diagram



Type: IMC 1,5/...-G-3,81 with MC 1,5/...-G-3,81