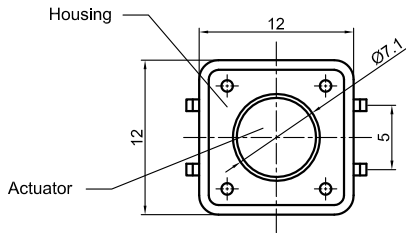


Dept  
Qty  
DC 1  
ED 1  
IE 1  
ISO 1  
PD 1  
R&D 1  
SD 1  
QA 1  
QC 1  
QE 1

The information provided herein is from CONNELY Electronic Co., Ltd. and is confidential. Any disclosure to a party other than the recipient is prohibited. The intellectual properties and its rights contained herein, including but not limited to, trademarks, patents, copyrights, trade secrets, and technical know-how, are owned exclusively by CONNELY or its affiliates. Unauthorized use of this information in any format or manner, CONNELY may enforce its intellectual property rights at its own discretion; failures or delays to exercise such rights does not constitute a waiver of such rights.

REV.	DESCRIPTION	DRAWN	CHECKED	APPROVED
A	NEW RELEASE	HP 23/06/05'		LJC 23/06/05'
E	DRAWING UPDATE	JLZ 05/24/19'		

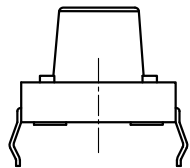


NOTES:

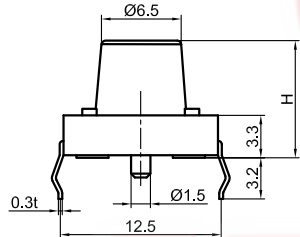
1. SPECIFICATIONS

- switch function: Single pole Single throw
- contact rating: 50mA at 12vdc
- insulation resistance:100MΩ min at 500vdc
- contact resistance:100mΩ max
- operating life:100,00 cycles
- operating force: see below

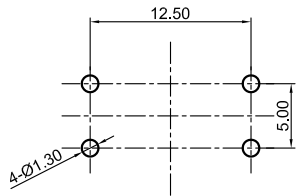
- stop strength: place the switch such that vertical, a static load of 3kgf shall be applied in the direction of stem,operation for a period of 15 secs.
- stroke: (12x12)0.35±0.1mm
- operation temperature range: -20°C to 70°C
- storage temperature range: -20°C to +70°C
- wave soldering: recommended solder temperature at 500°F(260°C)max. 5 seconds,subject to pcb 1.6mm thickness.
- hand soldering: usea soldering iron of 30 watts,controlled at 608°F(320°C)approximately 2 seconds while applying solder.



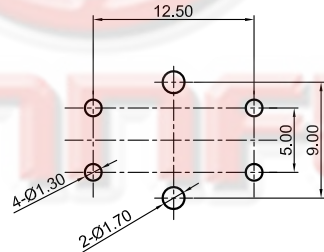
WITHOUT POST



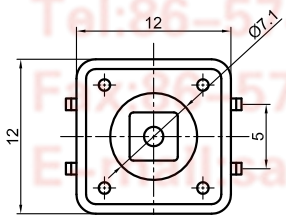
WITHOUT COVER



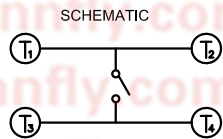
RECOMMEND P.C.B.LAYOUT  
TOLERANCE=±0.05  
(W/O POST)



RECOMMEND P.C.B.LAYOUT  
TOLERANCE=±0.05  
(W/ POST)



WITH COVER



3. PRODUCT NUMBER CODE:

DS1041 - X X X X X X X X

- Post support:
- X: W/O Post
- N/A Code: W/ Post
- Operating Life
- 5: 50000 cycles
- 10: 100000 cycles
- Operating force
- 130: 130gf 160: 160gf
- 170: 170gf 250: 250gf
- Cover type
- X: W/O cover
- S: W/ cover(For H=7.3mm only)
- Packing type
- A: polybag
- B: tube
- Actuator color
- U: blue K: black N: brown R: red
- S: Salmon Y: yellow
- Housing color
- U: blue K: black N: brown R: red
- S: Salmon Y: yellow
- Profile height(DIM.H, H>7.3 The cover is cylindrical,Black )
- 1:4.3mm 2:5.0mm 3:7.0mm 4:7.3mm
- 5:9.5mm 6:13.0mm 7:7.5mm 8:8.0mm
- 9:8.5mm 10:12.0mm 11:12.5mm 12:17.0mm
- 13:7.8mm 14:9.0mm 15:10.0mm 16:11.0mm
- 17:15.0mm 18:20.0mm
- Size
- 2:12mmX12mm

GENERAL TOLERANCE		ANGLE TOLERANCE	
X.	±0.60	X.	±5°
.X	±0.38	.X	±3°
.XX	±0.25	.XX	±2°

DRAWING TYPE	CUSTOMER
SCALE	1:1
DRAWING NO.	C-DS1041-XXXXXXXX-X-E

PROJECTION	TITLE
UNITS	TACT SWITCH DIP TYPE
SHEET SIZE	SERIES DS1041 SERIES

晨翔电子有限公司  
CONNFLY CONNELY ELECTRONIC CO. LTD