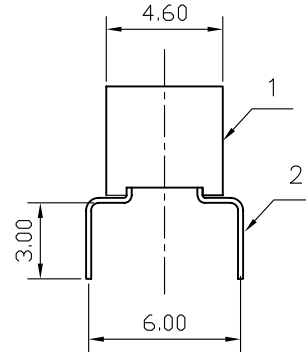
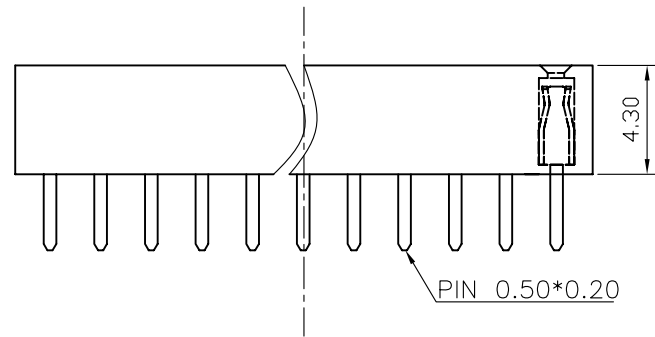
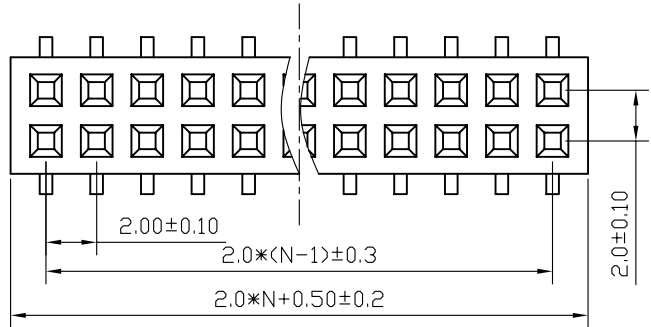


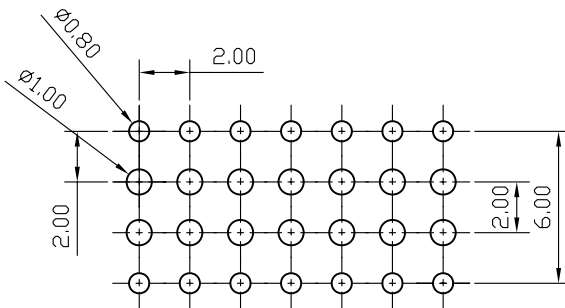
REV.	DESCRIPTION	DRAWN	CHECKED	APPROVED
A	NEW RELEASE	LJH 06/22/05'		

NOTES:

- ELECTRICAL CHARACTERISTICS:
 - CONTACT RESISTANCE: 20mΩ Max. INITIAL.
 - DIELECTRIC WITHSTANDING VOLTAGE: 500V AC(rms) FOR 1 MINUTE.
 - INSULATION RESISTANCE: 1000MΩ Min.
- ENVIRONMENT CHARACTERISTICS:
 - OPERATING TEMPERATURE: 0°C~+85°C.
 - STORAGE TEMPERATURE: -20°C~+70°C.
- PART NUMBER: DS1026-11
- PRODUCT NUMBER CODE:
 DS1026-11 - X X X X X
 - CONTACTS TYPE
R:RIGHT ANGLE
 - HOUSING COLOR
B:BLACK
 - CONTACT PLATING
8: FULL GOLD FLASH
 - CONNECTOR TYPE
S:SOCKET
 - No.OF CONTACTS
2*1-2*X
 - SERIES No.
DS1026-11



N: HALF OF PIN POSITIONS




RECOMMEND PCB LAYOUT
(TOLERANCE=±0.05)

GENERAL TOLERANCE		ANGLE TOLERANCE	
X.	±0.60	X.	±5'
.X	±0.38	.X	±3'
.XX	±0.25	.XX	±2'

PROJECTION	TITLE	BOTTOM ENTRY TYPE DUAL ROW	
UNITS	mm		
SHEET SIZE	A4	SERIES	DS1026-11 SERIES

2	CONTACT		COPPER ALLOY	GOLD PLATED	DRAWING TYPE	CUSTOMER		
1	HOUSING		THERMOPLASTIC	UL 94 V-0	SCALE	1:1	SHEET	1 OF 1
ITEM	PART NAME	PART NO.	MATERILAS	FINISHED	DRAWING NO.	C-DS1026-11-XXXXX		


晨翔电子有限公司
CONNFLY CONNFLY ELECTRONIC CO. LTD