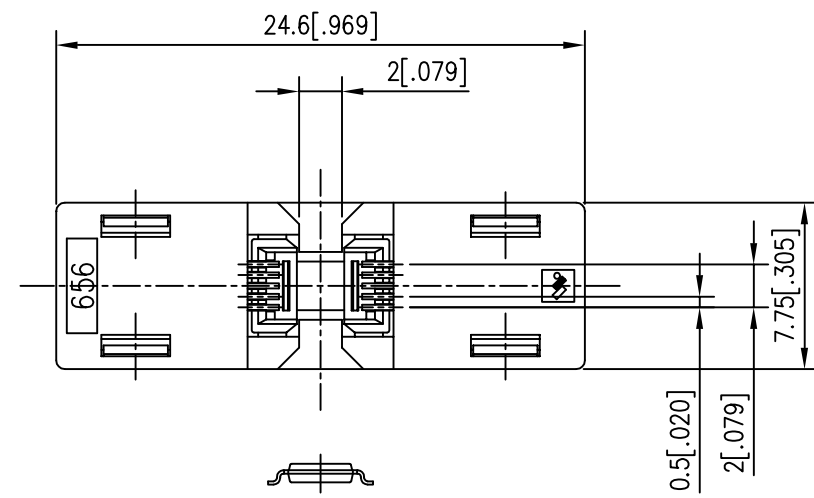
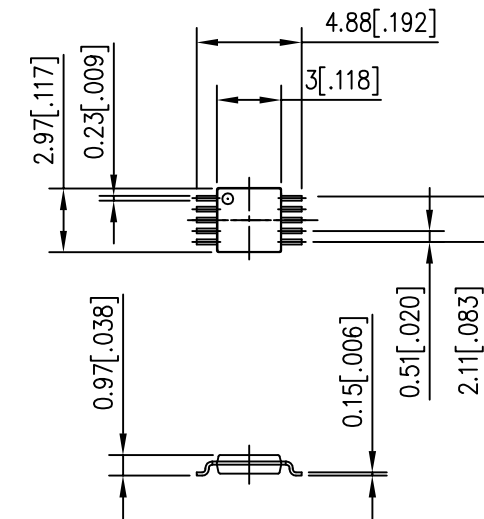


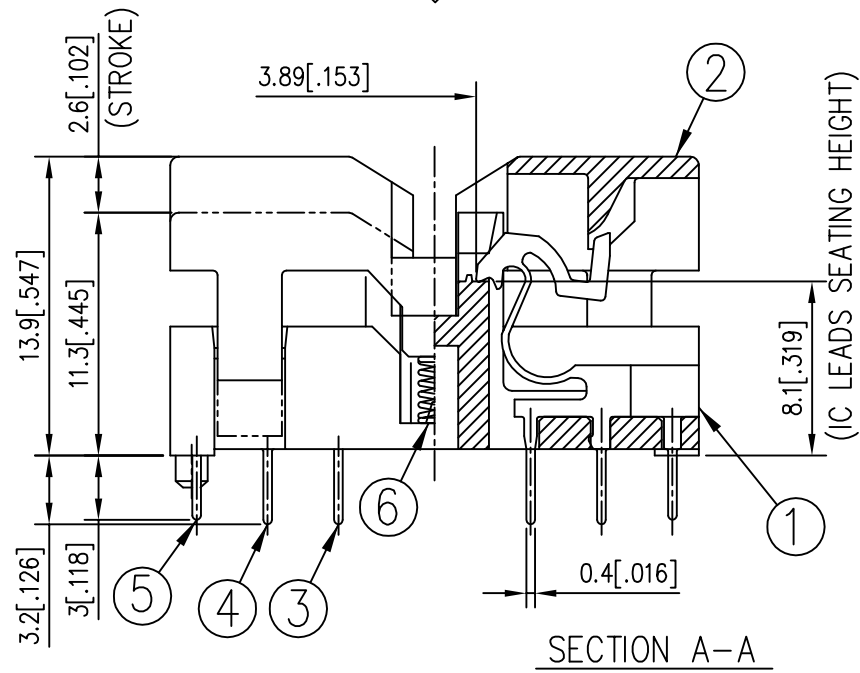
REV	DATE	ECO NO	DESCRIPTION	BY
0	Mar 17 1998	ERN 98107		M,I



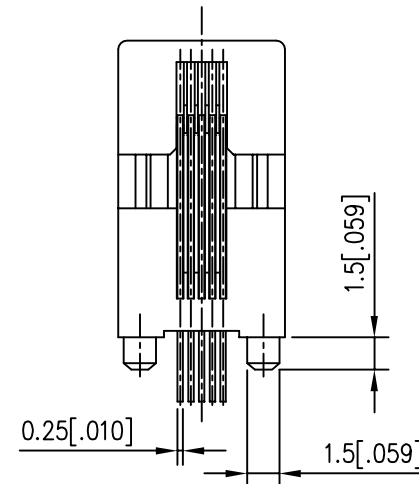
IC TO BE SEATED



RECOMMENDED IC (REF)



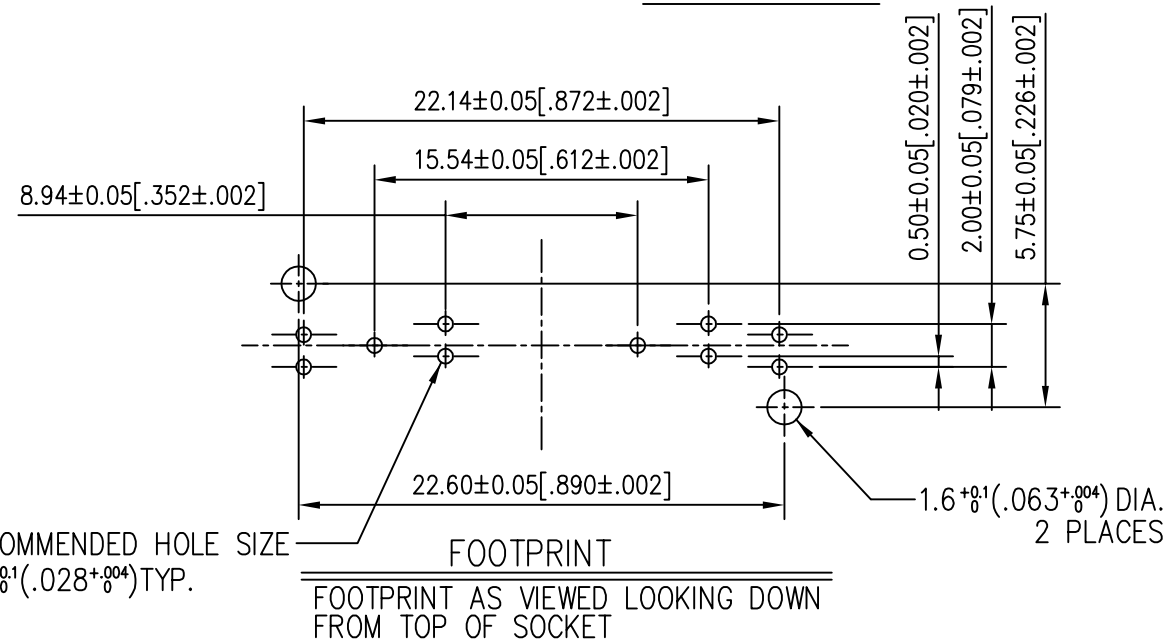
SECTION A-A



Performance.

1. Insulation Resistance : 1000 MΩ min. at 500V.D.C
2. Dielectric Withstanding Voltage : 600 V.A.C (RMS)
3. Contact Resistance : 30 mΩ max. at 20mV max.
4. Temperature Range : -40°C ~ +150°C

ITEM	PART DESCRIPTION	PARTS NO.	QTY	DWG NO.	NOTE
⑥	SPRING	SUS	2		
⑤	CONTACT- (C)	Be Cu	4		PLATING : Au
④	CONTACT- (B)	Be Cu	3		PLATING : Au
③	CONTACT- (A)	Be Cu	3		PLATING : Au
②	SSOP 10P COVER	PEI(GF)	1		COLOR : BLACK
①	SSOP 10P BASE	PEI(GF)	1		COLOR : BLACK



THIS DOCUMENT CONTAINS PROPRIETARY DESIGNS, SPECIFICATIONS, DATA, INFORMATION AND TECHNICAL MATERIAL THAT ARE THE SOLE PROPERTY OF WELLS-CTI. THIS INFORMATION IS TO BE HELD AND TREATED BY ITS RECIPIENT ON A CONFIDENTIAL BASIS, AND IS NOT TO BE SHOWN OR DISCLOSED TO THIRD PARTY WITHOUT THE WRITTEN CONSENT OF WELLS-CTI. THIS DATA DOES NOT CONVEY MANUFACTURING RIGHTS TO ANY ITEMS SHOWN.

この図面に含まれる技術情報の一部は WELLS-CTI 単独の所有権を有する。従って情報非開示の原則に基づき WELLS-CTI 社の書面による同意無しにこの図面を第三者に開示すること及び製造目的に使用することを禁ずる。

GENERAL TOLERANCES		
±0.1, ±1°		
UNIT	SCALE	ANGLE
mm	3X	3rd.
DRAWN	/	/
ENGINEER	/	/
CHECKED	/	/
APPROVED	/	/

WELLS-CTI A subsidiary of PCD, Inc.		YOKOHAMA KANAGAWA JAPAN	
		ウエルズ・シーティアイ 株式会社	
PART NAME			
SSOP 10P SOCKET			
PART NUMBER		REV	
656-0102211		0	
DWG NUMBER		SHEET	
656MSA003		1/1	