

Base strip - MSTBA 2,5/ 6-G - 1757514

Please be informed that the data shown in this PDF Document is generated from our Online Catalog. Please find the complete data in the user's documentation. Our General Terms of Use for Downloads are valid (<http://phoenixcontact.com/download>)

Header, Nominal current: 12 A, Rated voltage (III/2): 320 V, Number of positions: 6, Pitch: 5 mm, Color: green, Contact surface: Tin, Mounting: Soldering




The figure shows a 10-position version of the product

Product Features

- Other pin lengths available on request
- Plug-in direction parallel to the conductor axis
- W type with stand-off
- Standard pin strip for 320 V (III/2)



Key commercial data

| | |
|--------------------------------------|---|
| Packing unit | 1 pc |
| GTIN |  4 017918 030049 |
| Weight per Piece (excluding packing) | 2.4 GRM |
| Custom tariff number | 85366990 |
| Country of origin | Germany |

Technical data

Dimensions

| | |
|----------------|----------|
| Length | 12 mm |
| Pitch | 5 mm |
| Dimension a | 25 mm |
| Pin dimensions | 1 x 1 mm |
| Hole diameter | 1.4 mm |

General

Base strip - MSTBA 2,5/ 6-G - 1757514

Technical data

General

| | |
|---|-----------------|
| Range of articles | MSTBA 2,5/...-G |
| Insulating material group | I |
| Rated surge voltage (III/3) | 4 kV |
| Rated surge voltage (III/2) | 4 kV |
| Rated surge voltage (II/2) | 4 kV |
| Rated voltage (III/3) | 250 V |
| Rated voltage (III/2) | 320 V |
| Rated voltage (II/2) | 400 V |
| Connection in acc. with standard | EN-VDE |
| Nominal current I_N | 12 A |
| Maximum load current | 12 A |
| Insulating material | PA |
| Inflammability class according to UL 94 | V0 |
| Color | green |
| Number of positions | 6 |

Classifications

eCl@ss

| | |
|------------|----------|
| eCl@ss 4.0 | 272607xx |
| eCl@ss 4.1 | 27260701 |
| eCl@ss 5.0 | 27260701 |
| eCl@ss 5.1 | 27260701 |
| eCl@ss 6.0 | 27260704 |
| eCl@ss 7.0 | 27440402 |
| eCl@ss 8.0 | 27440402 |

ETIM

| | |
|----------|----------|
| ETIM 3.0 | EC001121 |
| ETIM 4.0 | EC002637 |
| ETIM 5.0 | EC002637 |

UNSPSC

| | |
|---------------|----------|
| UNSPSC 6.01 | 30211810 |
| UNSPSC 7.0901 | 39121409 |
| UNSPSC 11 | 39121409 |
| UNSPSC 12.01 | 39121409 |
| UNSPSC 13.2 | 39121409 |

Base strip - MSTBA 2,5/ 6-G - 1757514

Approvals

Approvals


Approvals


CSA / UL Recognized / VDE Gutachten mit Fertigungsüberwachung / cUL Recognized / IEC60364 CB Scheme / CCA / EAC / cULus Recognized

Ex Approvals

Approvals submitted

Approval details

| | | |
|--|-------|-------|
| CSA  | | |
| | B | D |
| Nominal current I _N | 15 A | 10 A |
| Nominal voltage U _N | 300 V | 300 V |

| | | |
|---|-------|-------|
| UL Recognized  | | |
| | B | D |
| Nominal current I _N | 15 A | 10 A |
| Nominal voltage U _N | 300 V | 300 V |

| | |
|---|-------|
| VDE Gutachten mit Fertigungsüberwachung  | |
| Nominal current I _N | 12 A |
| Nominal voltage U _N | 250 V |

Base strip - MSTBA 2,5/ 6-G - 1757514

Approvals

| | | |
|-----------------------|-------|-------|
| cUL Recognized | | |
| | B | D |
| Nominal current I_N | 15 A | 10 A |
| Nominal voltage U_N | 300 V | 300 V |

| | |
|-----------------------|-------|
| IECEE CB Scheme | |
| Nominal current I_N | 12 A |
| Nominal voltage U_N | 250 V |

| | |
|-----------------------|-------|
| CCA | |
| Nominal current I_N | 12 A |
| Nominal voltage U_N | 250 V |

| |
|-----|
| EAC |
|-----|

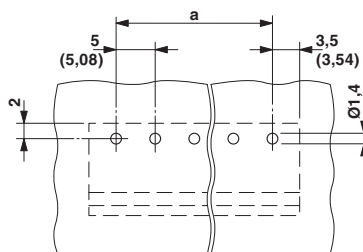
| |
|------------------|
| cULus Recognized |
|------------------|

Drawings

Diagram

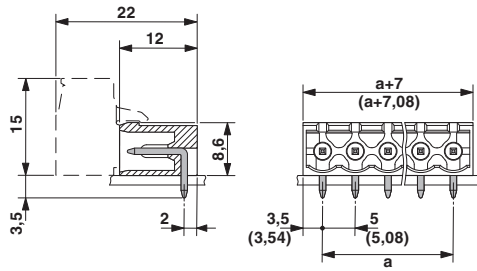
Type:
FKCVR
2,5/...-
ST
with
MSTBA
2,5/...-
G

Drilling diagram

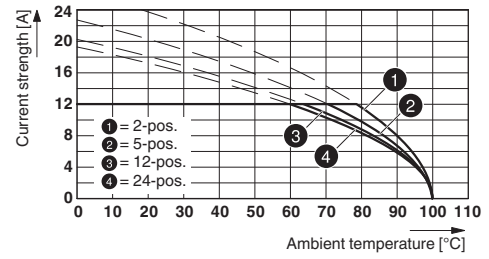


Base strip - MSTBA 2,5/ 6-G - 1757514

Dimensioned drawing



Diagram



Type: MSTBP 2,5/...-ST with MSTBA 2,5/...-G