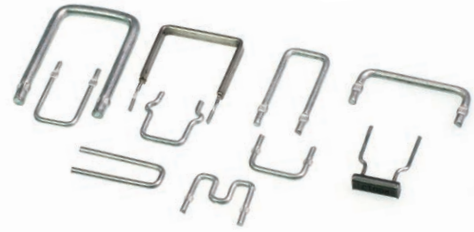
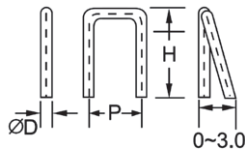


Feature

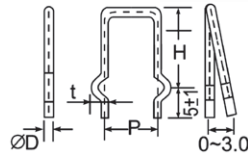
- Made by Cu/Ni or Mn/Cu Alloy resistance wire materials
- Excellent Solderability
- Suitable for all kinds of Current sense application
- Application: Power Supply



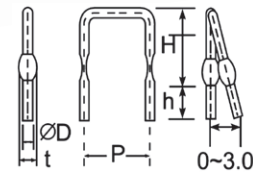
CSRA Type



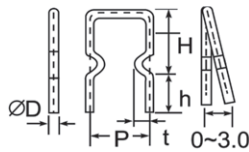
CSRB Type



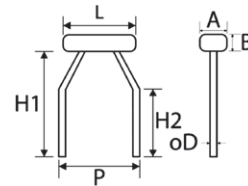
CSRC Type



CSRD Type



CSRE Type

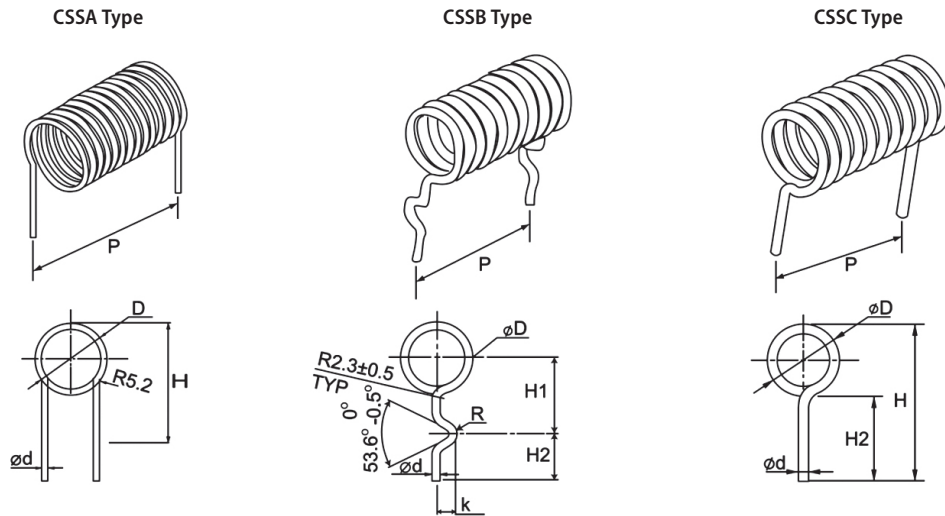


Specification

| Type | ØD | Rated Current | Resistance Range | TCR | Remark |
|------------------------------|--------|---------------|------------------|------------|---|
| CSRA CSRB CSRC CSRD | Ø0.8mm | 4.5A | 5mΩ~50mΩ | ±100PPM/°C | w*P&H could be design by customer's requirement *Temperature coefficient of resistor could be design by customer's requirement |
| | Ø0.9mm | 5.0A | 5mΩ~40mΩ | | |
| | Ø1.0mm | 5.5A | 3mΩ~30mΩ | | |
| | Ø1.1mm | 6.0A | 3mΩ~20mΩ | | |
| | Ø1.2mm | 7.0A | 3mΩ~20mΩ | | |
| | Ø1.3mm | 7.5A | 3mΩ~20mΩ | | |
| | Ø1.4mm | 8.0A | 3mΩ~20mΩ | | |
| | Ø1.5mm | 9.0A | 3mΩ~20mΩ | | |
| | Ø1.6mm | 9.5A | 3mΩ~15mΩ | | |
| | Ø1.8mm | 11A | 3mΩ~10mΩ | | |
| | Ø2.0mm | 12A | 3mΩ~10mΩ | | |
| CSRE | Ø2.3mm | 14A | 3mΩ~7mΩ | | |
| | Ø1.0mm | 50A | 1mΩ | | |

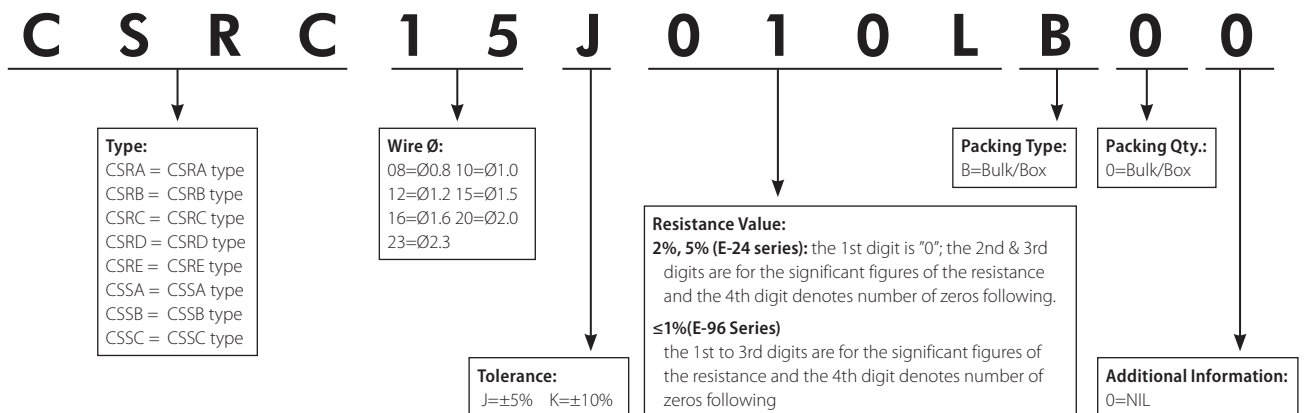
Feature

- Made by Cu/Ni or Mn/Cu Alloy resistance wire materials
- Excellent Solderability
- Suitable for all kinds of Current sense application
- Application: Power Supply



| Type | ΦD | Rated Current | Resistance Range | Remark |
|----------------------|--------|---------------|------------------|--|
| CSSA CSSB CSSC | Φ0.8mm | 4.5A | 5mΩ~50mΩ | *P&H could be design by customer's requirement |
| | Φ1.0mm | 5.5A | 3mΩ~30mΩ | |
| | Φ1.6mm | 9.5A | 3mΩ~15mΩ | |
| | Φ2.0mm | 12A | 3mΩ~10mΩ | |

Ordering Procedure (Example: CSRC Φ1.5mm 10mΩ±5% B/B)



Remark: For more details, please check page 135, Part No. System