



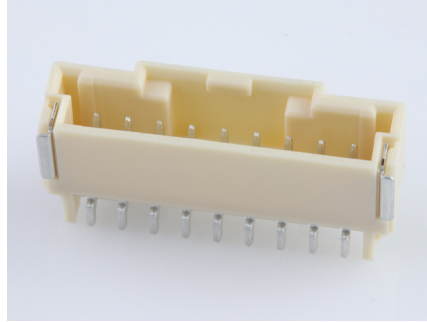
Part Number : [5023520900](#)

Product Description : DuraClik Wire-to-Board Header, Single Row, Right-Angle, 9 Circuits, Tin (Sn) Plating, Natural

Series Number : 502352

Status : Active

Product Category : PCB Headers and Receptacles



Documents & Resources

Drawings

[5023520900_sd.pdf](#)

3D Models and Design Files


[5023520900_stp.zip](#)

Specifications

[PK-502352-002-JP-001.pdf](#)

Product Environment Compliance

Compliance

GADSL/IMDS	Compliant with Exemption 44; 33
China RoHS	
EU ELV	Compliant per 2000/53/EC
Low-Halogen Status	Not Low-Halogen per IEC 61249-2-21
REACH SVHC	Not Contained per D(2024)4144-DC (27 June 2024)
EU RoHS	Compliant per EU 2015/863

Multiple Part Product Compliance Statements

- Eu RoHS
- REACH SVHC
- Low-Halogen

Multiple Part Industry Compliance Documents

- IPC 1752A Class C
- IPC 1752A Class D

- Molex Product Compliance Declaration
- IEC-62474
- chemSHERPA (xml)

EU RoHS Certificate of Compliance

Part Details

General

Status	Active
Category	PCB Headers and Receptacles
Series	502352
Description	DuraClik Wire-to-Board Header, Single Row, Right-Angle, 9 Circuits, Tin (Sn) Plating, Natural
Application	Automotive, Signal, Wire-to-Board
Comments	The Operating Temperature Range when used with DuraClik series 502351 is -40°C to +105°C. It is -40°C to 125°C when used with DuraClik ISL series 560123 or TPA series 505151.
Component Type	PCB Header
Product Family	DuraClik Connector System
Product Name	DuraClik
UPC	887191654058

Agency

UL	E29179
----	--------

Electrical

Current - Maximum per Contact	3.0A
Voltage - Maximum	125V

Physical

Breakaway	No
Circuits (Loaded)	9
Circuits (maximum)	9
Color - Resin	Natural
Durability (mating cycles max)	30

First Mate / Last Break	No
Flammability	SC-0
Glow-Wire Capable	No
Keying to Mating Part	Yes
Lock to Mating Part	Yes
Mated Height	6.40mm
Material - Metal	Copper Alloy
Material - Plating Mating	Tin
Material - Resin	Polyamide
Net Weight	1.014/g
Number of Rows	1
Orientation	Right Angle
Packaging Type	Embossed Tape on Reel
PCB Locator	No
PCB Retention	Yes
Pitch - Mating Interface	2.00mm
Polarized to Mating Part	Yes
Polarized to PCB	Yes
Stackable	No
Temperature Range - Operating	-40° to +105°C
Termination Interface Style	Surface Mount

Solder Process Data

Max-Duration	40
Lead-Free Process Capability	REFLOW
Max-Cycle	1
Max-Temp	255

Mates With / Use With

Mates with Part(s)

Description	Part Number
DuraClik Single Row Receptacle Housings	<u>502351</u>
DuraClik TPA Single Row Receptacle Housings	<u>505151</u>

DuraClik ISL Single Row Receptacle Housings	<u>560123</u>
--	---------------

This document was generated on Oct 17, 2024