

MATERIALS & SPECIFICATIONS

INSULATOR:
LIQUID CRYSTAL POLYMER (LCP)
PER ASTM D5138

ORGANIZER BLOCK:
LIQUID CRYSTAL POLYMER (LCP)
PER ASTM D5138

CONTACT:
COPPER ALLOY PER MIL-DTL-83513, GOLD PLATED PER ASTM B488, (HARD GOLD) TYPE II
CODE C, CLASS 1.27

TERMINATION:
SOLDER COATED WITH SN63A PER J-STD-006 OR AMS-P-81728

LATCH BOX:
BERYLLIUM COPPER PER ASTM B194 NICKEL PLATE PER SAE-AMS-2404

CURRENT CAPACITY:
3 AMP MAX PER MIL-DTL-83513

CONTACT RESISTANCE:
26 MILLIOHMS (65 mV) MAX @ 2.5 AMPS PER MIL-DTL-83513

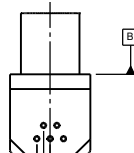
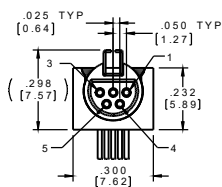
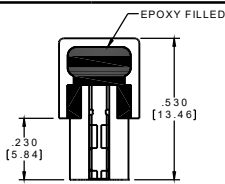
PERFORMANCE:
PRODUCT FAMILY TESTED TO AND PASSED THE PERFORMANCE SPECIFICATIONS OF TABLE VII OF MIL-DTL-83513



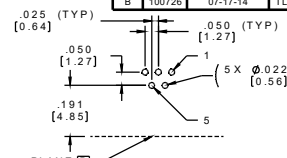
ACTUAL SIZE

NOTE:
△ TAIL DIMENSIONS APPLY AT PLANE A

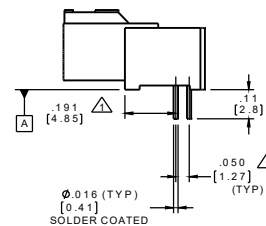
DIMENSIONS IN [] ARE IN MILLIMETERS UNLESS OTHERWISE NOTED AND ARE FOR REFERENCE ONLY



PART NO.	REV	ECO	DATE	APP
A22062-001	B	100726	07-17-14	TLM



PLANE B
SUGGESTED HOLE PATTERN



THIRD ANGLE	TOLERANCES:		DATE: 11-13-12		TITLE: (S) SOCKET MICRO RIGHT ANGLE CIRCULAR W/LATCH	
1 P.L.D.E.C: .01	2 P.L.D.E.C: .005	3 P.L.D.E.C: .0005	4 P.L.D.E.C: .0005	5 P.L.D.E.C: .0005	6 P.L.D.E.C: .0005	7 P.L.D.E.C: .0005
8 P.L.D.E.C: .0005	9 P.L.D.E.C: .0005	10 P.L.D.E.C: .0005	11 P.L.D.E.C: .0005	12 P.L.D.E.C: .0005	13 P.L.D.E.C: .0005	14 P.L.D.E.C: .0005

OMNETICS
CONNECTOR CORPORATION
7260 COMMERCE CIRCLE EAST
MINNEAPOLIS, MN 55432
WWW.OMNETICS.COM

CAGE CODE 61873	DWG NO.	A22062-001	REV	B
SCALE: 3:1	SHEET 1 OF 1	REV	B	