



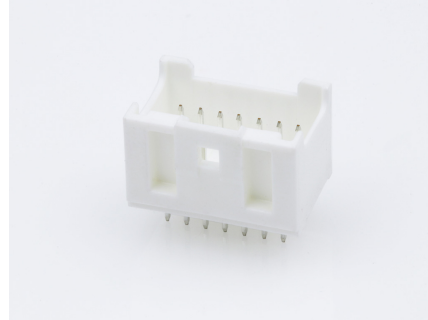
**Part Number :** [559171430](#)

**Product Description :** 2.00mm Pitch  
MicroClasp Wire-to-Board Header, Dual Row,  
Vertical, 14 Circuits, without PCB Locator

**Series Number :** 55917

**Status :** Active

**Product Category :** PCB Headers and  
Receptacles



---

## Documents & Resources

### Drawings

[559171430\\_sd.pdf](#)

### 3D Models and Design Files

[559171430\\_stp.zip](#)

### Specifications

[561340000-AS-000.pdf](#)

[559179200-SPK-200.pdf](#)


[PS-51353-003-001.pdf](#)

[PS-51353-010-001.pdf](#)

---

## Product Environment Compliance

### Compliance

GADSL/IMDS	Not Relevant
China RoHS	
EU ELV	Not Relevant
Low-Halogen Status	Not Low-Halogen per IEC 61249-2-21
REACH SVHC	Not Contained per D(2024)4144-DC (27 June 2024)
EU RoHS	Compliant per EU 2015/863

### Multiple Part Product Compliance Statements

- Eu RoHS
- REACH SVHC
- Low-Halogen

## Multiple Part Industry Compliance Documents

- IPC 1752A Class C
- IPC 1752A Class D
- Molex Product Compliance Declaration
- IEC-62474
- chemSHERPA (xml)

## EU RoHS Certificate of Compliance

---

### Part Details

#### General

Status	Active
Category	PCB Headers and Receptacles
Series	55917
Description	2.00mm Pitch MicroClasp Wire-to-Board Header, Dual Row, Vertical, 14 Circuits, without PCB Locator
Application	Signal, Wire-to-Board
Component Type	PCB Header
Product Family	MicroClasp Wire-to-Board System
Product Name	MicroClasp
UPC	756054338933

#### Agency

UL	E29179
----	--------

#### Electrical

Current - Maximum per Contact	3.0A
Voltage - Maximum	250V AC (RMS)/DC

#### Physical

Breakaway	No
Circuits (Loaded)	14
Circuits (maximum)	14
Color - Resin	Natural
Durability (mating cycles max)	30
First Mate / Last Break	No

Flammability	94V-0
Glow-Wire Capable	No
Guide to Mating Part	No
Keying to Mating Part	None
Lock to Mating Part	Yes
Material - Plating Mating	Tin
Material - Plating Termination	Tin
Material - Resin	Polyester
Net Weight	1161.300/mg
Number of Rows	2
Orientation	Vertical
Packaging Type	Tray
PC Tail Length	3.20mm
PCB Locator	No
PCB Retention	Yes
PCB Thickness - Recommended	1.60mm
Pitch - Mating Interface	2.00mm
Shrouded	Fully
Stackable	No
Temperature Range - Operating	-40° to +105°C
Termination Interface Style	Through Hole

---

## Mates With / Use With

### Mates with Part(s)

Description	Part Number
MicroClasp Dual Row Receptacle Housings	<u>51353</u>