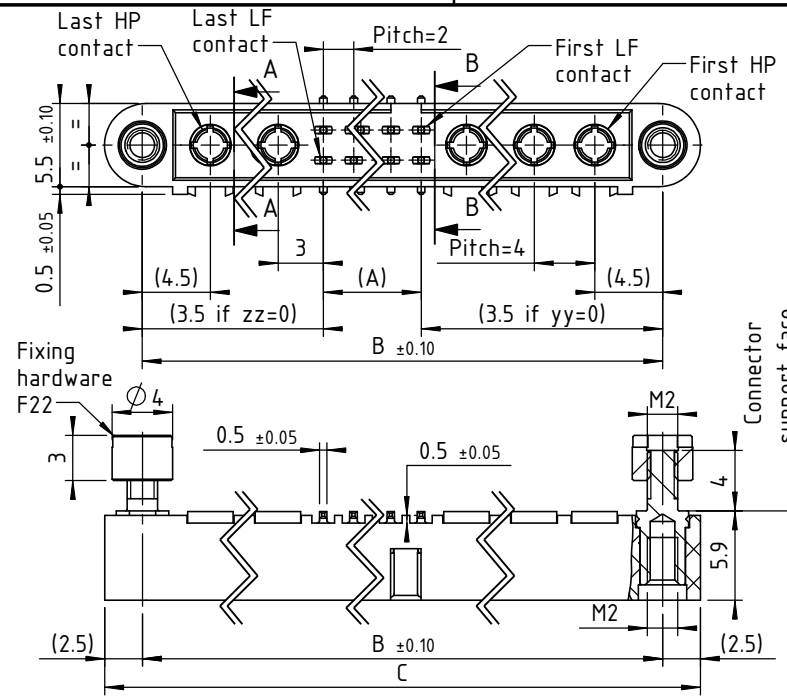


CUT A-A

CUT B-B



Part numbering :

nn : number of LF contacts
 yy : number of HP contacts side LF pin 1
 zz : number of HP contacts opposite side LF pin 1

Distance between the axes and length in mm :

$A = nn - 2$
 $B = \{(yy + zz) \times 4\} + A + 7$
 $B_{max.} = 65$
 $C = B + 5$

TECHNICAL FEATURES for 30 HP CONTACTS

MATERIAL

- Body: Copper alloy / Ni + Au 0.5µ

MECHANICAL

- Endurance: 500 cycles min. up to 2500.
- Insertion force: From 0.60 to 5N per contact
- Extraction force: From 0.50 to 2N per contact
- Secure overlapping: 1.30 mm

ELECTRICAL

- Intensity: 20 A
- Contact resistance: max. 6 mΩ
- Maximum voltage (sea level): 1000V (RMS)
- Operating voltage (sea level): 180 V AC/500 mA

TECHNICALS FEATURES

MATERIAL

INSULATOR : Special PPS (Polyphenylene Sulfide Fibreglass filled thermoplastic) UL 94-V0

- Radiation resistance
- No humidity absorption
- Oxygen free

Note : PPS characteristics are recognized for space applications

SIGNAL CONTACTS for PCB:

- Male :**
- Contact area: Copper alloy / Ni + Au 1µ
 - Contact tail: Copper alloy / Ni + Au flash 0.1µ

FIXING HARDWARE :

- Jackscrew : Stainless steel

ELECTRICAL for LF Contacts

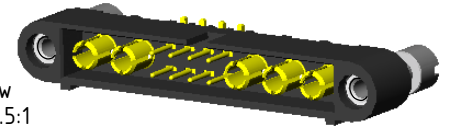
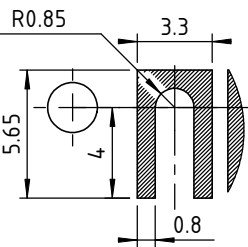
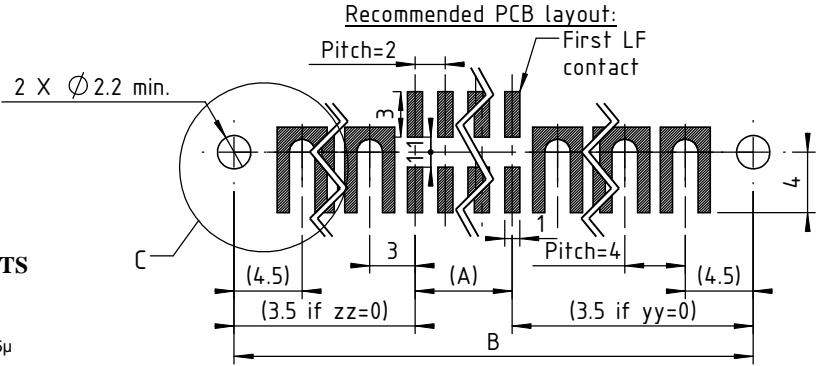
- All contacts: 3 A max. @ 25°C, 2.2 A max. @ 85°C
- Working voltage (sea level): Tested at 800 V DC
- Proof voltage: Tested at 1200 V DC
- Contact resistance (initially): max. 10 mΩ
- Insulation resistance: 1000 MΩ min

MECHANICAL for LF Contacts

- Mechanical operations: 500 cycles min. up to 2500
- Contact insertion and withdrawal force: 2 N max. / 0.2 N min. per contact

ENVIRONMENTAL

- Temperature range: From -60°C to +260°C
- Vibration severity: 0.75mm, 10 g RMS 6 hours long random with superimposed sinusoid. No intermittencies measured when using an H.S.L.I. (High Speed Logic Interrupt) detector with a trip threshold of 2 ns. 100g for 6 ms
- Shock severity: HcFc 141 bMGX (ATOCHEM) solvent
- Solvent resistance: 96 hrs
- Salt spray test: 56 days @ 90% humidity
- Humidity test: 56 days @ 90% humidity



3D view scale : 1.5:1

Marking as referenced in the CMM catalogue pages 12 & 13

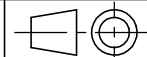
 www.nicomatic.com Mail : nicomatic@nicomatic.fr Tel : +33 (0)4.50.36.13.85	2	30/11/11	A.Z.		N.P.
	Iss	Date	Drawn	Checked	Approved
Item : Connector CMM220 male straight SMT, nn LF contacts, yy+zz HP contacts 30-3600, F22					

Tools recommended		
Fixing	Screwdriver for standard nut	C14743

Folder : X:\Méthodes\Plans clients\Plans clients 2D\10 - CMM220\Connecteurs mâtes\221T\221TnnF22-yyzz-3600_cl

This document and drawings, sketches, and schematic drawings are the property of the NICOMATIC company, and no parts thereof may be reproduced and used without the written consent of the owner. Law dated 11.03.1902

Catalogue Reference : **221TnnF22-yyzz-3600**



General tolerance	±0.2	Scale	2:1	Page	1/1
-------------------	------	-------	-----	------	-----

4

3

2

1

4

3

2

1