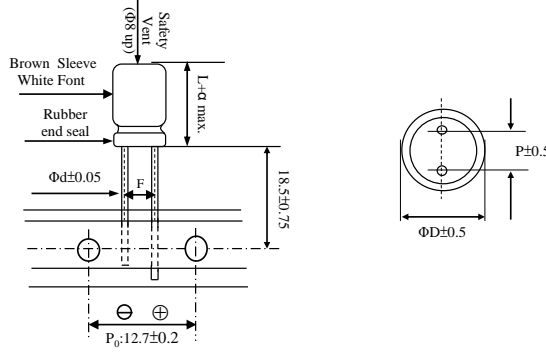


FOR APPROVAL

DIMENSIONS(mm)

| | |
|-----------------------------------|-----|
| ΦD | 10 |
| L | 16 |
| α | 2.0 |
| P | 5.0 |
| F ^{+0.8} _{-0.2} | 5.0 |
| Φd | 0.6 |



| | | |
|-----------------------------|--|-------------------------------|
| Customer: Ozdisan | Electrolytic Capacitors MF Series | Su'scon Code |
|-----------------------------|--|-------------------------------|

| | | | | | | | | | | | | |
|---------------------------|----------------------|------|------|--------|--------|-------|-----------|----------|------|----------|----------------|-------|
| Electric Characteristics: | | | | | | | | | | | | |
| Ozdisan | Su'scon | Cap. | Cap. | Rate | Surge | Oper. | Nominal | Leakage | D.F. | R.C | IMP | Load |
| P/N | P/N | (uF) | Tol. | Volt. | Volt. | Temp. | Case Size | Current | MAX | 100KHz | 100KHz | Life |
| | MF035M471G16PKKKP50R | 470 | ±20 | 35 | 44 | 105 | 10*16 | 164 | 12 | 1210 | 0.060 | 5000 |
| | | | (%) | (V-DC) | (V-DC) | (°C) | D*L(mm) | Max (uA) | (%) | (mA rms) | at 25°C (Ω)Max | (H) |

REMARKS:

- Leakage Current Test:** 6.3V ~100V at 20°C for 2 minutes ; 160V ~450V at 20°C for 5 minutes ;
- Operating temperature:** 6.3V~400V -40°C~ +105°C ; 450V -25°C~ +105°C ;
- Dissipation Factor Test:** at 20°C, 120 Hz.
- Capacitance Test:** at 20°C, 120 Hz.
- Ripple Current Test:** at 105°C, 100K Hz ;
- Load Life:** 5000 hours, subjected to DC voltage with the rated ripple current is applied at 105°C.
(ΦD≤6.3Φ, 2000hrs; ΦD=8mm, 3000hrs).

Capacitance Change: Within±20% of initial value;

tanδ: 200% or less of initial specified value;

Leakage Current: Initial specified value or less;

7. Shelf Life: The following specifications shall be satisfied when the capacitors are restored to 20°C after exposing them for 1000 hours 105°C without voltage applide. Before the measurement, the capacitor shall be preconditioned by applying voltage according to them 4.1 of JIS C5101-4.

Capacitance Change : Within±20% of initial value;

tanδ: 150% or less of initial specified value;

Leakage Current: Initial specified value or less.

8. when have characteristic requested: Load life & shelf life test and etc. , judgment standard reference to our catalogue.

●SPECIFICATION

| | | | | | | | | | | | | | |
|------------------------------------|--|--|------|------|------|------|------|-------|------|---------|------|------|------|
| Voltage Range 工作電壓範圍 | 6.3~100V | 160~450V | | | | | | | | | | | |
| Leakage Current 洩漏電流 | WV≤100V, I≤0.01CV or 3uA (After 2 minutes application of DC working voltage, at 20°C) | WV>100V, I≤0.03CV+20(uA), (After 5 minutes application of DC working voltage, at 20°C) | | | | | | | | | | | |
| Dissipation Factor 散逸因素 (損失角正切) | Measurement Frequency:120Hz. Temperature: 20°C | | | | | | | | | | | | |
| (tan δ) | Rate Voltage(V) | 6.3 | 10 | 16 | 25 | 35 | 50 | 63~80 | 100 | 120~250 | 350 | 400 | 450 |
| | tanδ (MAX) | 0.20 | 0.17 | 0.16 | 0.14 | 0.12 | 0.10 | 0.08 | 0.08 | 0.15 | 0.20 | 0.25 | 0.25 |
| | When nominal capacitance over 1000μF, tanδ shall be added 0.02 to the listed value with increase of every 1000μF . | | | | | | | | | | | | |
| Standards 參照標準 | JIS C-5101-4(IEC 60384) | | | | | | | | | | | | |

●RIPPLE CURRENT COEFFICIENTS

Frequency coefficient of allowable ripple current

| | | | | | | |
|------------------|-----------------|---------------|------|------|------|------|
| Rated Voltage(V) | Capacitance(uF) | Frequency(Hz) | | | | |
| | | 50 | 120 | 1k | 10k | 100k |
| 6.3~100 | 10~150 | 0.60 | 0.70 | 0.85 | 0.95 | 1.00 |
| | 220~1800 | 0.65 | 0.75 | 0.90 | 0.98 | 1.00 |
| | 2200~15000 | 0.75 | 0.80 | 1.00 | 1.00 | 1.00 |
| 160~450 | 1~330 | 0.55 | 0.65 | 0.80 | 0.90 | 1.00 |

The endurance of capacitors is reduced with internal heating produced by ripple current at the rate of halving the lifetime with every 5°C rise. When long life performance is required in actual use, the rms ripple current has to be reduced.
 Production date:2024.02.19