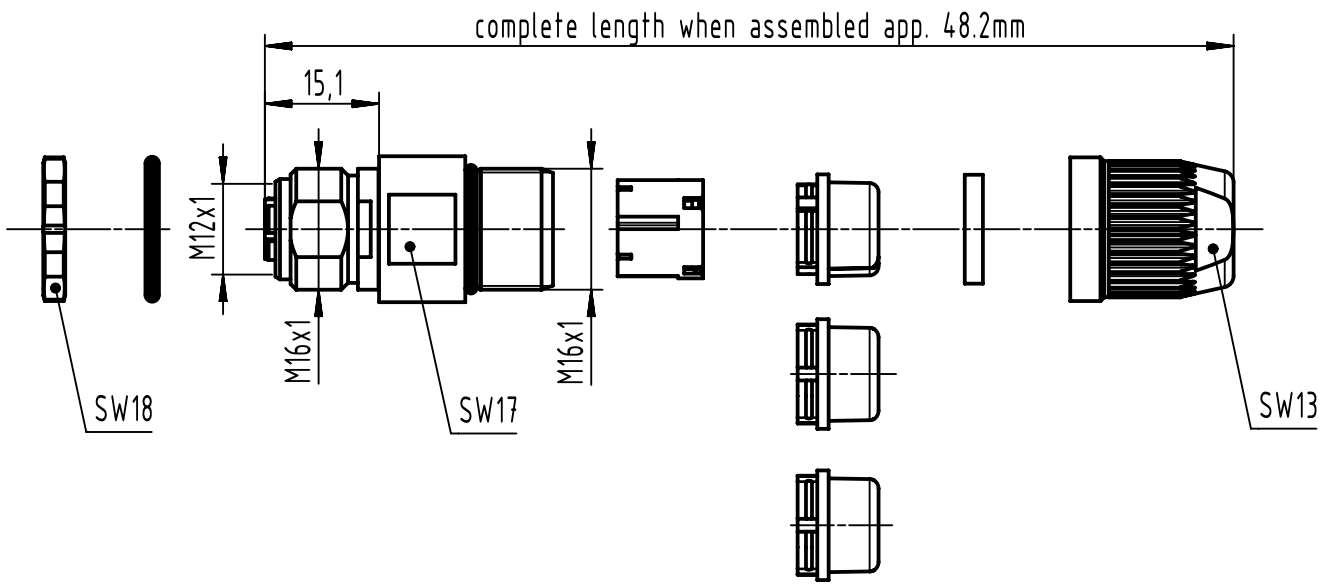
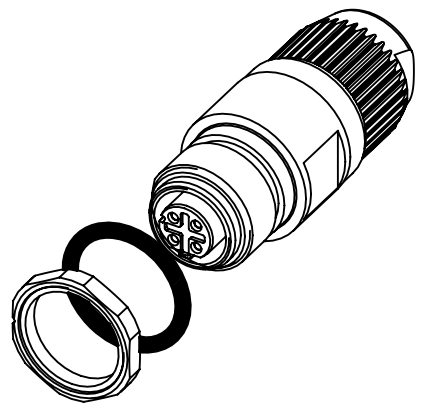
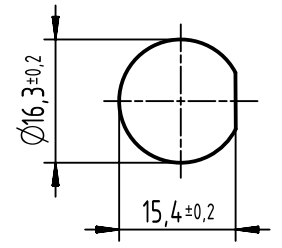


1 2 3 4 5 6

A
B
C
D



panel cut out
(1:1)



cable Ø			conductor cross section
5.5-7.2mm	4.5-5.4mm	7.0-8.8mm	
sealing			0.14 - 0.34mm ² AWG26-AWG22
black	transparent	beige	

	All Dimensions in mm Original Size DIN A4	Scale	Free size tol.		Ref.
		1:1			Sub.
All rights reserved Department EL PD	Created by HASSEBROCKS	Inspected by	Standardisation	Date	State
		104.122		2022-11-21	Final Release
HARTING D-32339 Espelkamp	Title M12-CC-IDC-4P-DCOD-F-STR-SHLD	Doc-Key / ECM-Nr. 100182121/UGD/004/H 500000230497			
		Type	Number	Rev.	Page
TB	21033812425	H	1/1		