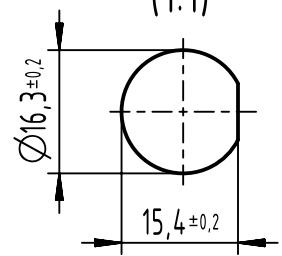
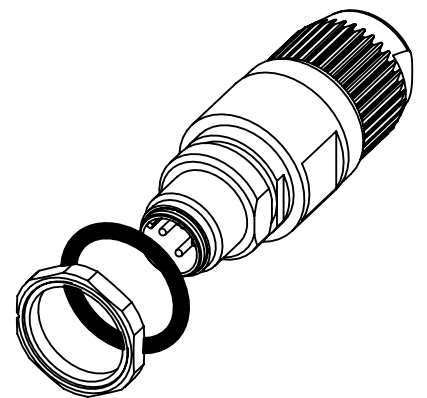


contact face acc. to IEC 61076-2-101

panel cut out (1:1)



cable $\varnothing$			conductor cross section
5.5-7.2mm	4.5-5.4mm	7.0-8.8mm	
sealing			0.14 - 0.34mm <sup>2</sup> AWG26-AWG22
black	transparent	beige	



	All Dimensions in mm Original Size DIN A4		Scale 1:1	Free size tol.		Ref.	
	All rights reserved Department EL PD		Created by BUSSMANN	Inspected by HASSEBROCKS	Standardisation	Sub.	
HARTING D-32339 Espelkamp		Title M12-CC-IDC-4P-DCOD-M-STR-SHLD				Date 2022-09-16	State Final Release
		Type TB	Number 21033811425			Doc-Key / ECM-Nr. 100202948/UGD/003/H 500000217565	Rev. H
						Page 1/1	