

Data sheet

Part No: SMS0604

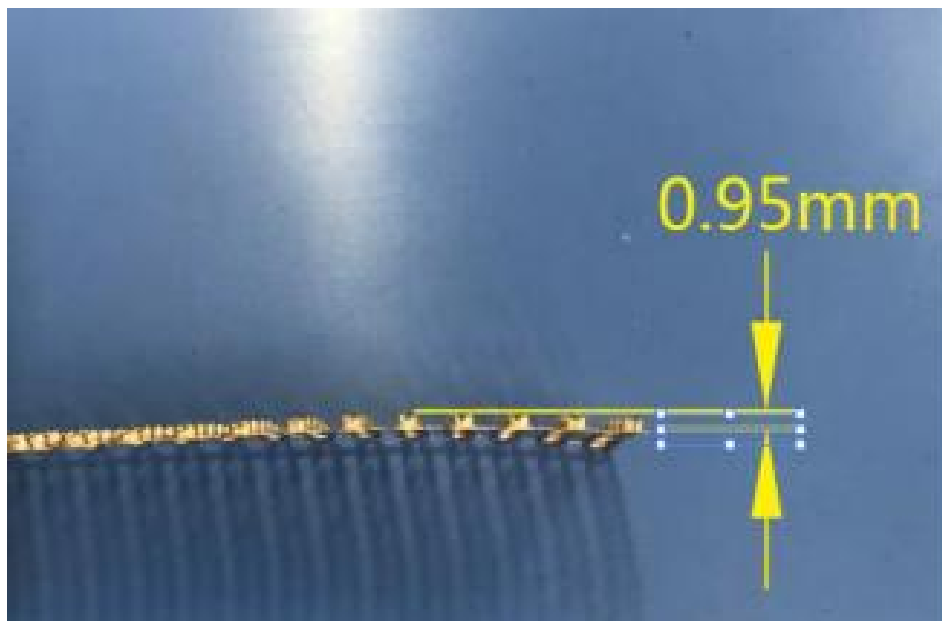
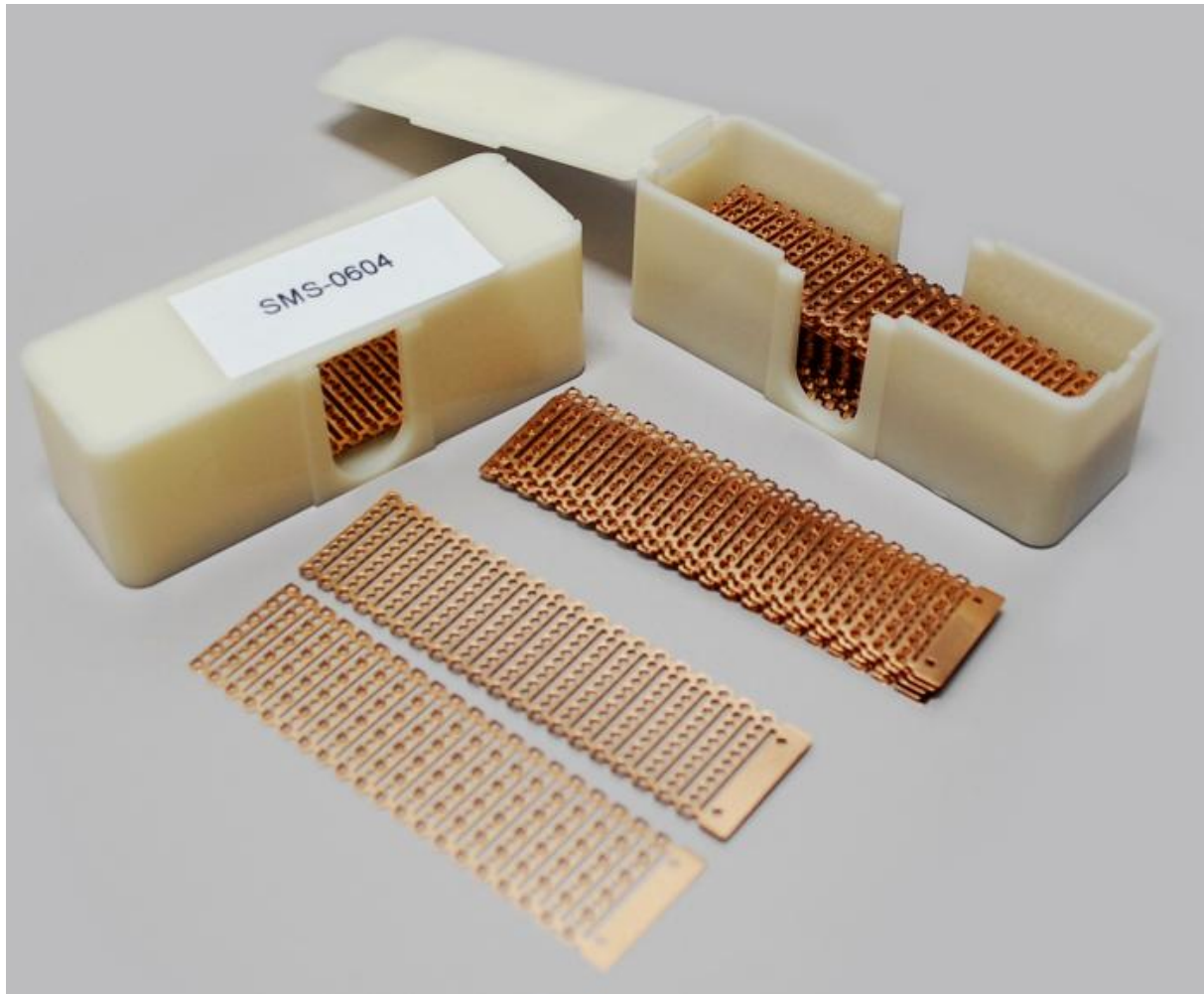
Version: A0

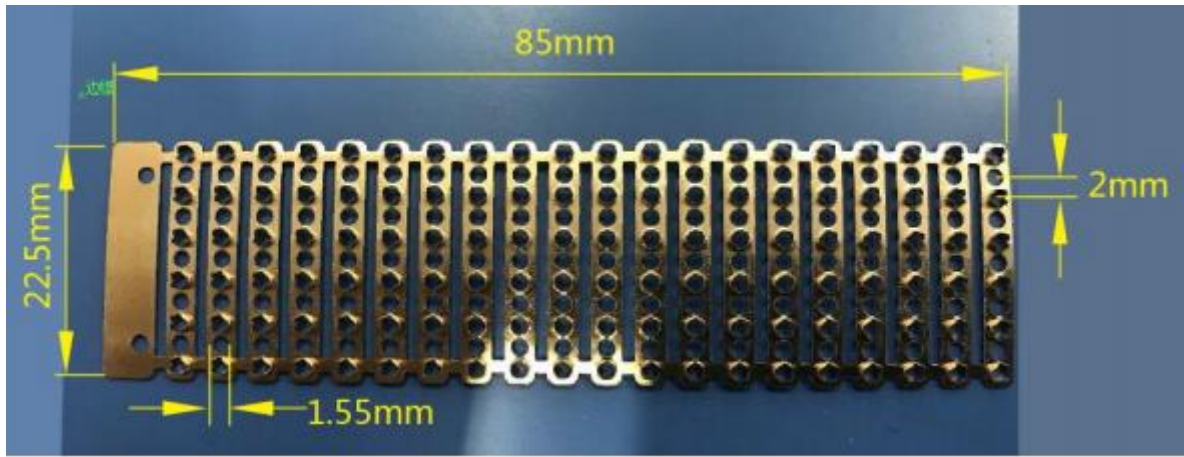
Description

SMS-0604 Stapler splice clip is used in SMT splicing process to clamp 2 carrier tapes tightly for good jointing reliability. Used with stapler type splice tool TL100 and TL102. The bandoleer splice shims are made of 0.95 mm thick phosphor copper, which is different from many similar materials on the market. Without sharp metal edges, our splice shims can easily pierce through all kind of paper and plastic carrier tapes.

Part No.	Size	Qty/Box
SMS0604	85x22.5mm	20clips/frame, 25frames/box, 500pcs clips/box

Picture





Storage condition

Temperature: 20-30°C

Relative Humidity (RH):45%-65%