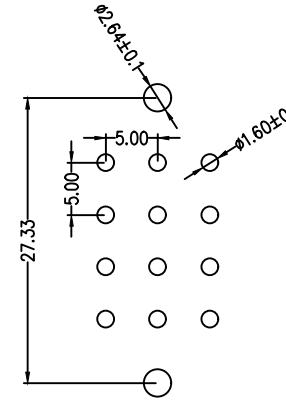
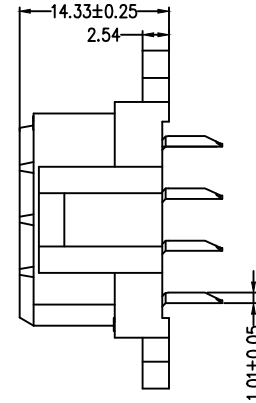
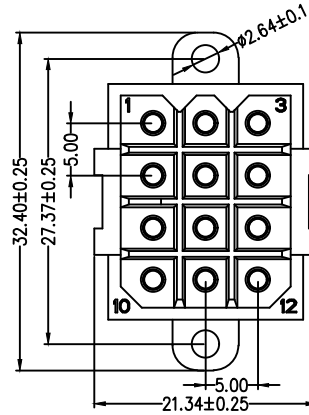
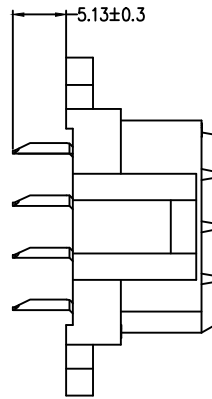
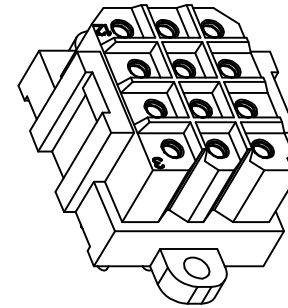
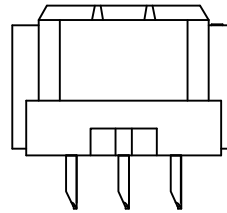


客户确认  
签章处



P.C.B Layout



SPECIFICATIONS

Current Rating:	7.5 Amp MAX
Insulator Resistance:	1000 MΩ/1000V
Dielectric Withstanding:	AC 500V1 min
Contact resistance:	20mΩ MAX.
Operating Temp.:	-40°C~+105°C
Insulator Material:	PA66 UL94V-0 Red Color ROHS
Contact Material:	Copper alloy
Plated(*Standard):	Inner Gold Outer tin

NINGBO KLS ELECTRONIC CO; LTD			REV: AO	GENERAL TOLERANCE UNLESS OTHERWISE NOTED	
			UNIT:mm		
TITLE: PH5.0 12PIN Socket header reddish brown		DRAW	Date:	x.±0.50	x'±5.00"
PART No: L-KLS1-EHD-5.00-3x04-S		CHECK	Date:	.x±0.25	.x'±2.00"
SCALE 1:1		APPRO.	Date:	.xx±0.10	.xx'±1.00"
PAGE: 1/1				.xxx±0.05	.xxx'±0.50"
				Length	Angle