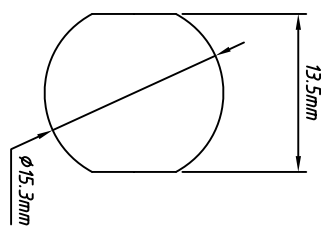
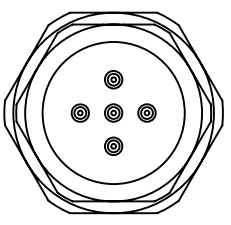


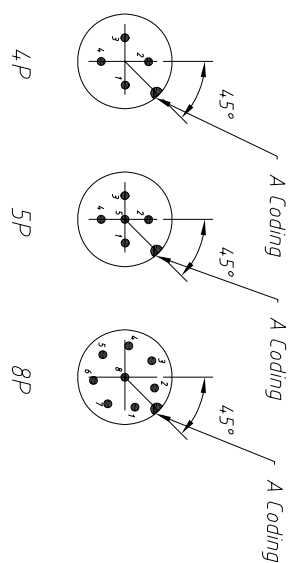
Front view



Panel Cut-out



Back view



**Electrical & Mechanical data**

- IP rating: IP67
- Contacts resistance:  $\leq 5\text{ m}\Omega$
- Insulation resistance:  $\geq 100\text{ M}\Omega$
- Orientation: PCB 180° Front Lock
- Over mold/ Shell: Metal shell
- Connector contacts: Brass with gold plated
- Coupling nut/screw: Brass with nickel plated screw
- Insert/ Housing: PA66 + GF
- Sealing: O-ring
- Temperature Range:  $-25^{\circ}\text{C} \sim +80^{\circ}\text{C}$

	4 Pin	5 Pin	8 Pin
Rated current	4A	4A	2A
Rated voltage	250V	60V	30V

**Order information**

L-KLS15-M12 A-CS2 XX

L: Rohs  
M12: Screw type  
A: A-Coding  
CS2: PCB 180°, Panel mount,  
Front lock, Male, CNC Screw  
XX: Number of Contacts

**GENERAL TOLERANCE**

X:  $\pm 0.60$   
.X:  $\pm 0.38$   
.XX  $\pm 0.25$

**ANGLE TOLERANCE**

X:  $\pm 5^{\circ}$   
.X:  $\pm 3^{\circ}$   
.XX  $\pm 2^{\circ}$

Draw by:	PROJECTION	mm
Check by:	UNITS	
	SHEET SIZE	A4

Description:	PCB 180° connector, Panel mount, Front lock, Automation technology, M12, Male, CNC Screw
KLS P/N:	KLS15-M12A-CS2XX

**KLS ELECTRONIC CO., LTD.**