

## Mini Din Connectors\* Din Connectors

KLS1-291A-10.0-5P DS Terminal Series

**Material:**

Base:PBT UL 94V-0

Contact:H62 Brass

**Environmental:**

Operating Temperature:-25 C ~ + 70 C

**Electrical:**

Rated Load:2A 100V AC

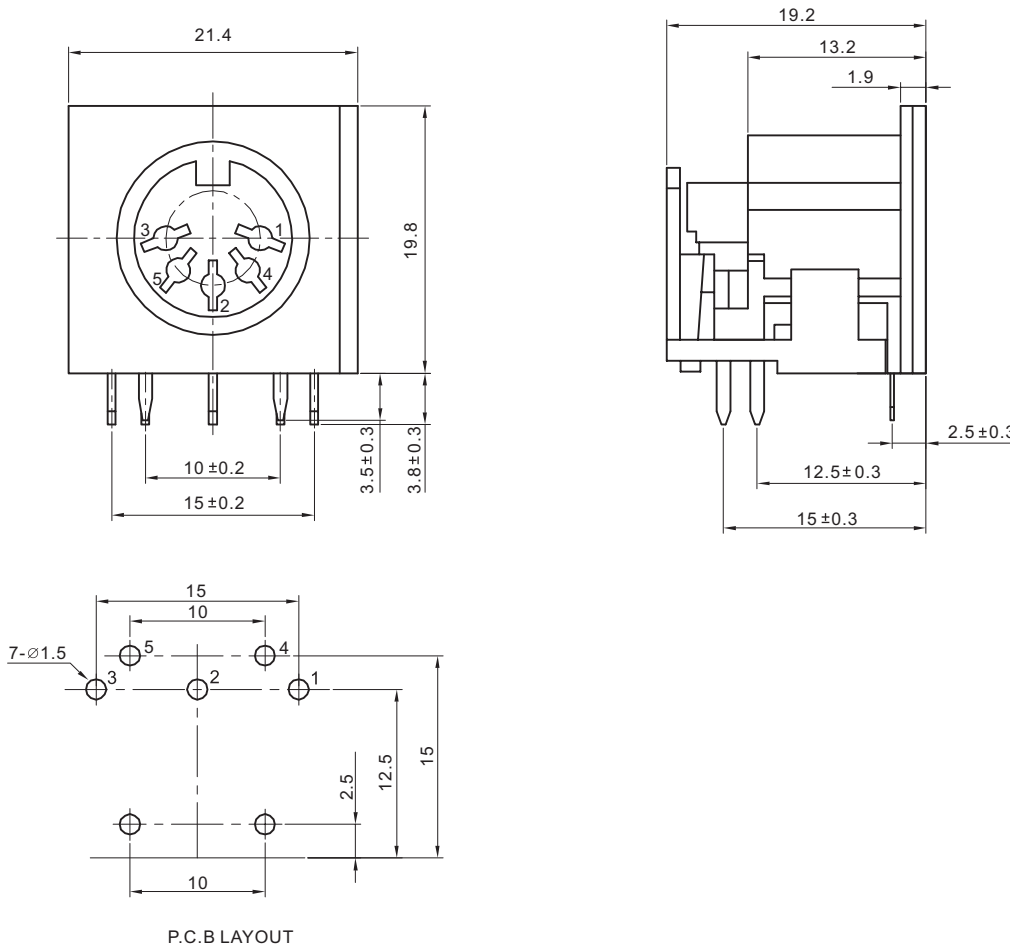
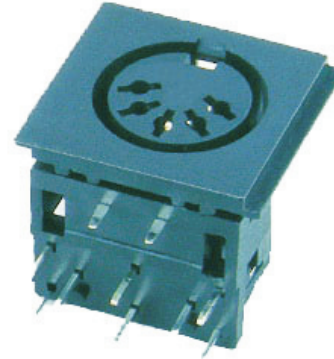
Dielectric Withstanding:500V AC(50Hz)/1min

Insulation Resistance:≥100MΩ

Contact Resistance:≤30mΩ

Insertion and Extraction Force:10-50N

Life:≥5000



## ORDER INFORMATION

Product NO.: KLS1-291A-10.0-5P



## Mini Din Connectors\* Din Connectors

### KLS1-291A-10.0-7P DS Terminal Series

**Material:**

Base: PBT UL 94V-0

Contact: H62 Brass

**Environmental:**

Operating Temperature: -25 C ~ + 70 C

**Electrical:**

Rated Load: 2A 100V AC

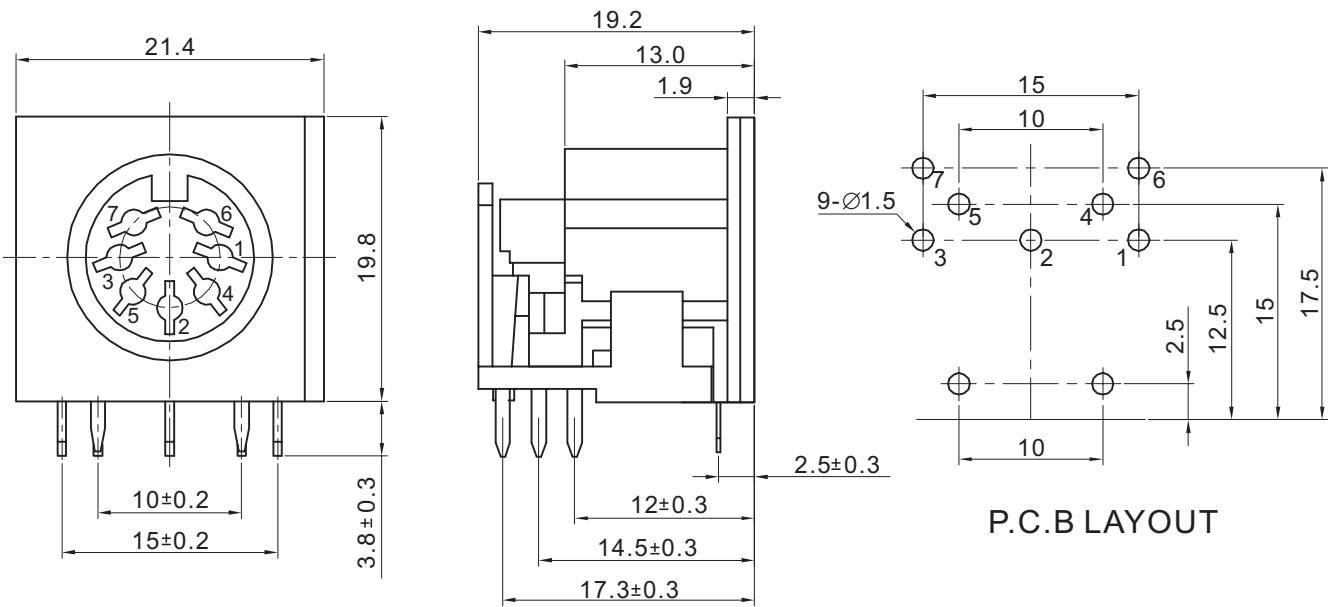
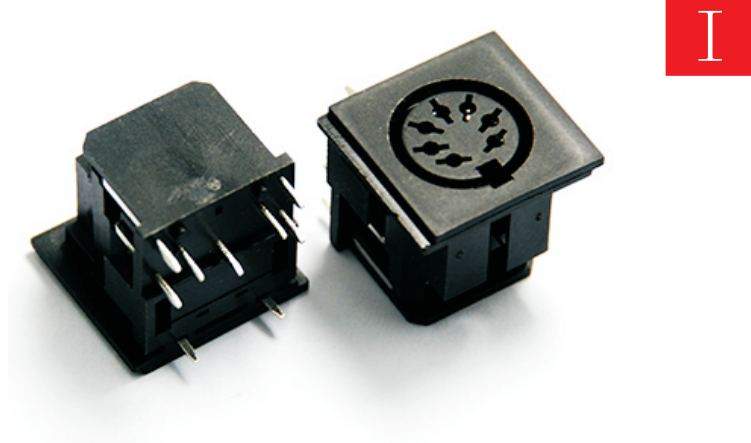
Dielectric Withstanding: 500V AC(50Hz)/1min

Insulation Resistance:  $\geq 100M\Omega$

Contact Resistance:  $\leq 30m\Omega$

Insertion and Extraction Force: 10-50N

Life:  $\geq 5000$



## ORDER INFORMATION

Product NO.: KLS1-291A-10.0-7P



## Mini Din Connectors\* Din Connectors

### KLS1-291A-10.0-8P DS Terminal Series

**Material:**

Base:PBT UL 94V-0

Contact:H62 Brass

**Environmental:**

Operating Temperature:-25 C ~ + 70 C

**Electrical:**

Rated Load:2A 100V AC

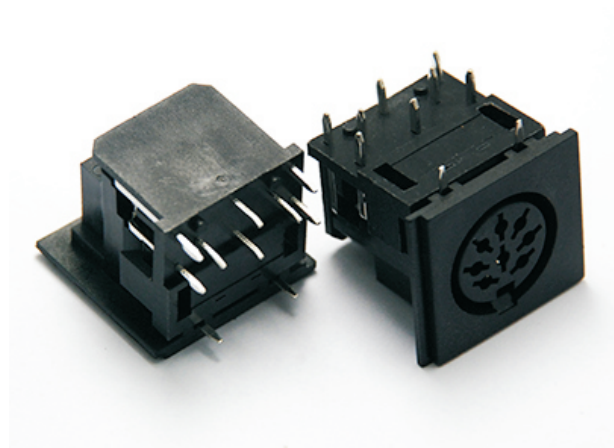
Dielectric Withstanding:500V AC(50Hz)/1min

Insulation Resistance: $\geq 100\text{M}\Omega$

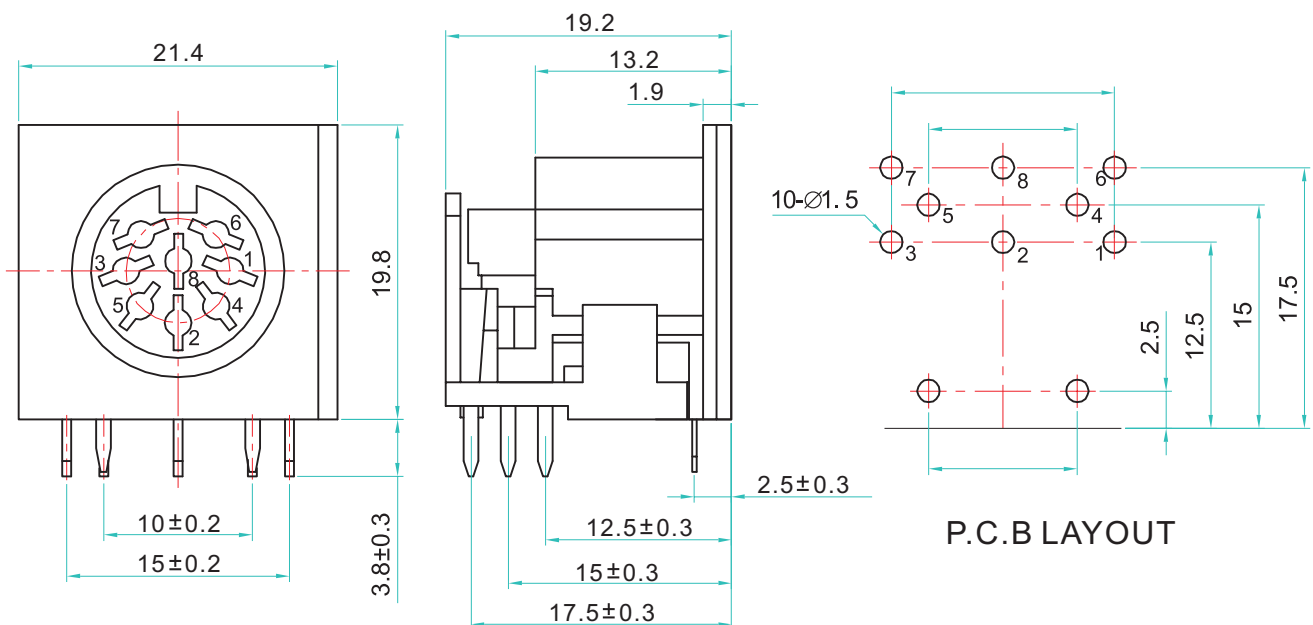
Contact Resistance: $\leq 30\text{m}\Omega$

Insertion and Extraction Force:10-50N

Life: $\geq 5000$



I



## ORDER INFORMATION

Product NO.: KLS1-291A-10.0-8P



## Mini Din Connectors\* Din Connectors

### KLS1-291L-10.0-5P DS Terminal Series

**Material:**

Base:PBT UL 94V-0

Contact:H62 Brass

**Environmental:**

Operating Temperature:-25 C ~ + 70 C

**Electrical:**

Rated Load:2A 100V AC

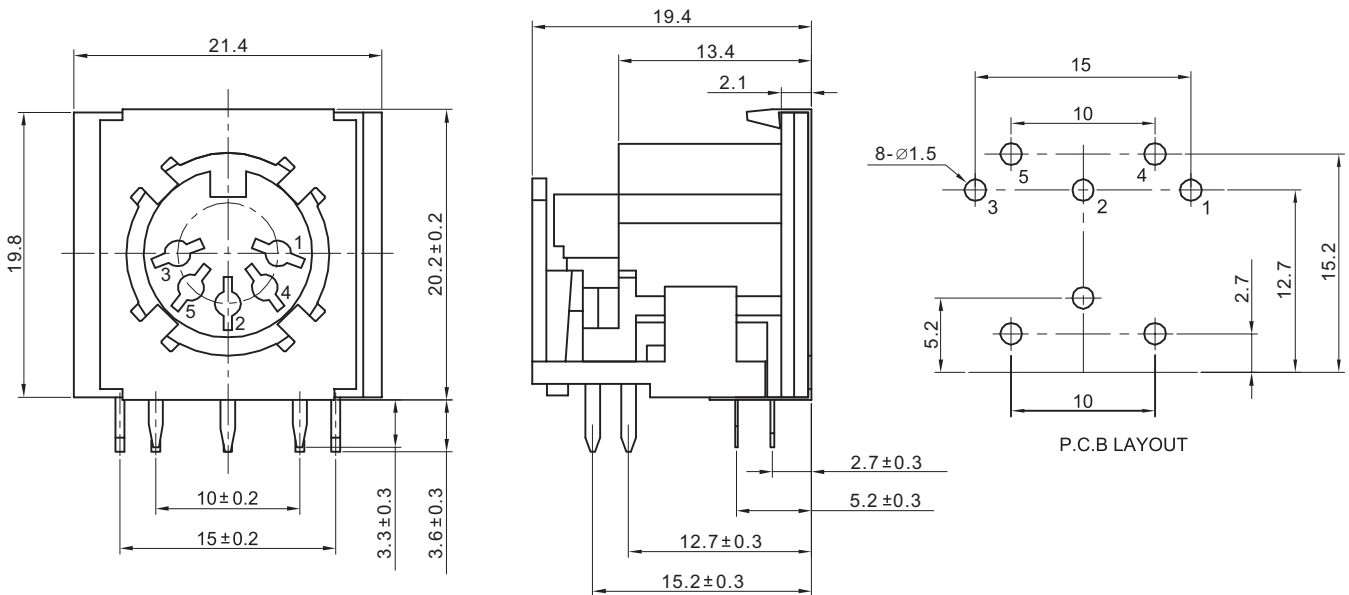
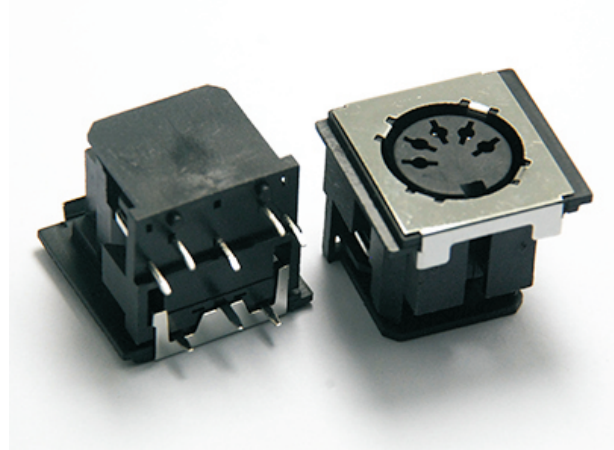
Dielectric Withstanding:500V AC(50Hz)/1min

Insulation Resistance: $\geq 100M\Omega$

Contact Resistance: $\leq 30m\Omega$

Insertion and Extraction Force:10-50N

Life: $\geq 5000$



## ORDER INFORMATION

Product NO.: KLS1-291L-10.0-5P

Pos. NO. ———— Pin Number:5-5P  
DS Terminal Series ———— Pitch:10.0mm