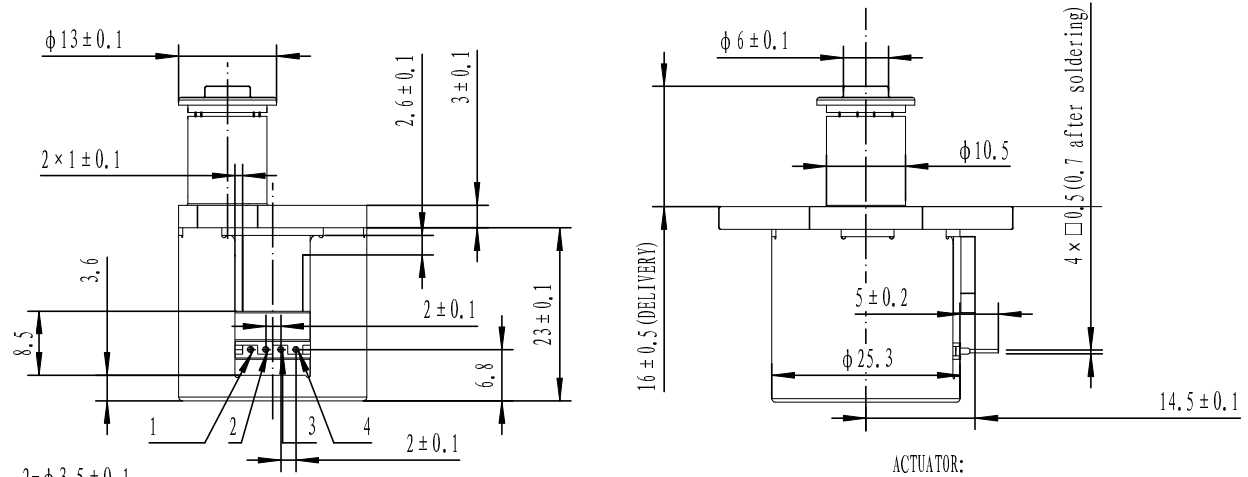
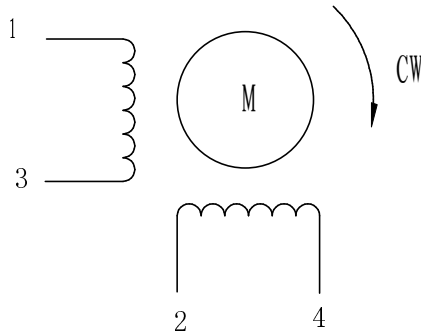


25BYJ412-25

Voltage	No. of Phase	Step Angle	Ratio	Winding Resistance	Current Per Phase	Max Pull-in Rate	Push Force at 500PPS	Winding temperature	Dielectric Strength
电压 V DC	相数	步距角	减速比	线圈电阻 Ω at 20℃	相电流 A	空载起动频率 PPS	推力 N	线圈温升 K	绝缘介电强度 VAC 1SEC 1mA
3.2	2	7.5° /10	1/10	5±7%	0.64 Max	750	≥70	≤60	600

Circuit diagram
接线图



- ACTUATOR:
- Stroke: 5 mm.
 - Spindle: 3.5 mm diameter pith 1.0 making by rooling.
 - Push force: Minimum 70N 2.6VDC 300 Hz.
Minimum 70N 3.2VDC 500Hz
 - Backlash: Maximum 0.01664 mm (8 Step)
 - Withstand pressure at spindle: Minimum 150 N
 - Withstand drag at spindle: Minimum 40 N
Withstand pressure at the ctuator: Minimum 300N
 - Spindle hardness: Maximum rated 0.2 mm. after test.
 - Stroke/step: 0.002mm/step (0.00208)

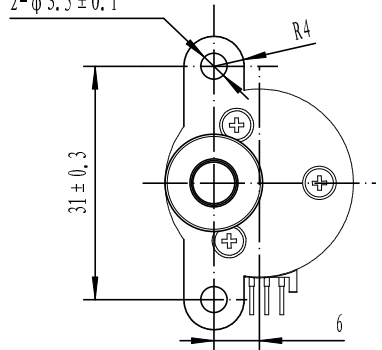
Drive Mode 驱动方式: 2-2

PIN NO 位号	Phase 相位	1	2	3	4
1	A	-			-
2	B	-	-		
3	\bar{A}		-	-	
4	\bar{B}			-	-

CCW ← → CW

Seen from flange side
从轴伸端视

as motor spindle CW, the push staff
will out of the motor
电机螺杆顺时针转动时, 推杆向上离开
电机体。



Rev.	Record for changing 更改记录			Date 年月日
Design 设计	周银凤	191127	Version 版本	A
Check 审核				
Technology 工艺				
Standard 标准化			Approve 批准	

Unit 单位: mm Scale 比例: 1:1

First angle method
第一角画法

Tolerances for linear and angular dimensions
without individual tolerance indications
未注线性与角度尺寸公差
GB/T 1804-m eqv ISO2768-1:m

Geometrical tolerance for features without
individual tolerance indications
未注形状和位置尺寸公差
GB/T 1084-k eqv ISO 2768-2:k

UNLESS OTHERWISE SPECIFIED
除非另有其他规格

GOOT MOTOR
SPECIFICATION
规格书 (送样)
TYPE
25BYJ412-25