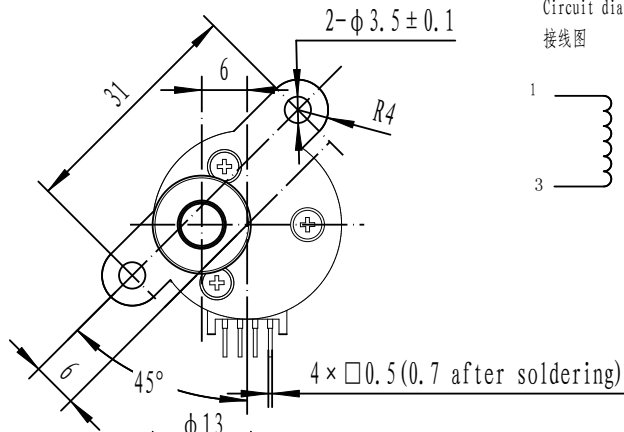
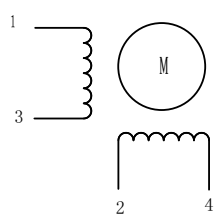


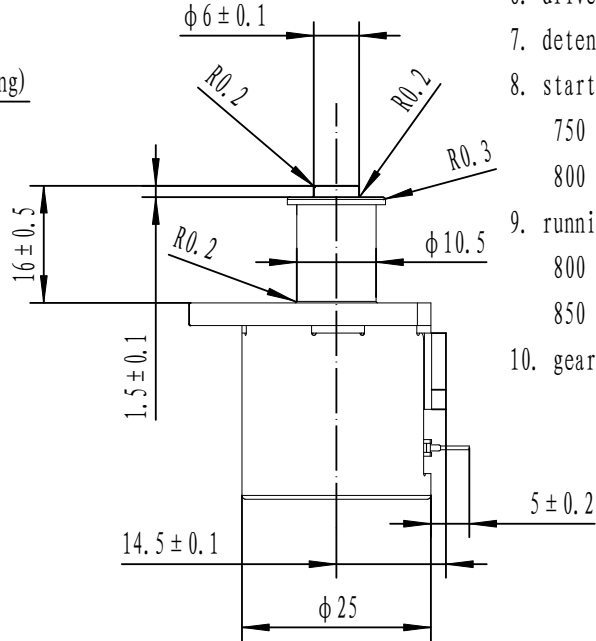
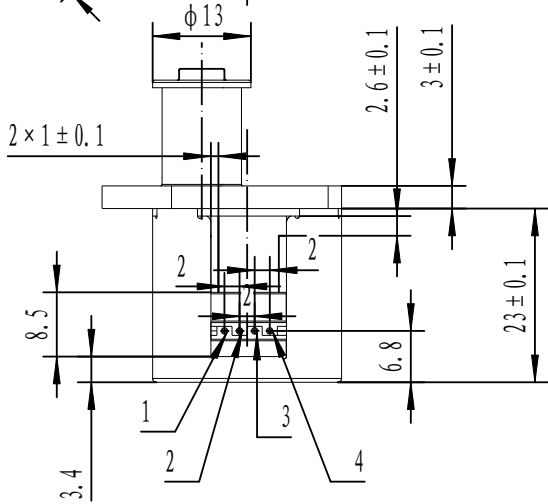
25BYJ-01



Circuit diagram
接线图



CCW as motor rotation CCW, the push staff will out of the motor

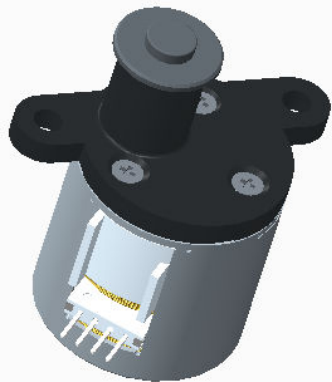


MOTOR:

- coil type: bipolar
- drive method: 2-2 phase
- resistance: $5\Omega \pm 7\%$ /phase
- inductance: $3mH \pm 20\%$ (ref)
- step angle: 7.5°
- drive voltage: 2.2-3.4 VDC
- detent torque: 60g.cm (ref)
- starting frequency:
 - 750 pps 2.6VDC
 - 800 pps 3.0VDC
- running frequency:
 - 800 pps 2.6VDC
 - 850 pps 3.0VDC
- gear ratio: 1:10

ACTUATOR:

- Stroke: 5 mm.
- Spindle: 3.5 mm diameter pith 1.0 making by rooling.
- Push force: Minimum 70N 3.2VDC 500Hz
- Backlash: Maximum 0.01664 mm (8 Step)
- Withstand pressure at spindle: Minimum 150 N
- Withstand drag at spindle: Minimum 40 N
- Withstand pressure at the ctuator: Minimum 300N
- Spindle hardness: Maximum rated 0.2 mm. after test.
- Stroke/step: 0.002mm/step (0.00208)



						投影法			CHANGZHOU GOOT MOTOR		
										OUTSIDE DRAWING	
标记	处数	分区	更改文件号	签名	年月日	阶段标记		重量	比例	25BYJ-01	
设计									1:1		
审核											
工艺											
标准化			批准			共 1 张		第 2 张			