



TIP122-Q

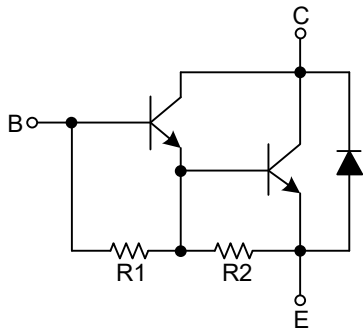
NPN SILICON TRANSISTOR

NPN EPITAXIAL TRANSISTOR

■ DESCRIPTION

The UTC **TIP122-Q** is a NPN epitaxial transistor, designed for use in general purpose amplifier low-speed switching applications.

■ EQUIVALENT TEST



($R_1 \approx 6k\Omega$, $R_2 \approx 0.5k\Omega$)

■ ORDERING INFORMATION

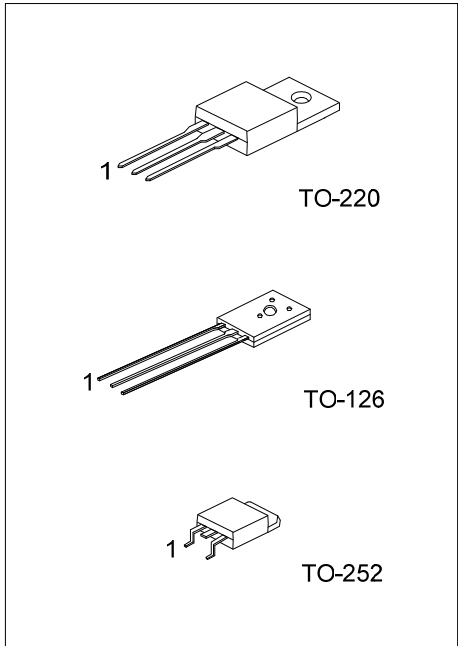
Ordering Number		Package	Pin Assignment			Packing
Lead Free	Halogen Free		1	2	3	
TIP122L-Q-TA3-T	TIP122G-Q-TA3-T	TO-220	B	C	E	Tube
TIP122L-Q-TN3-R	TIP122G-Q-TN3-R	TO-252	B	C	E	Tape Reel
TIP122L-Q-T60-T	TIP122G-Q-T60-T	TO-126	B	C	E	Tube
TIP122L-Q-T60-K	TIP122G-Q-T60-K	TO-126	B	C	E	Bulk

Note: Pin Assignment: B: Base C: Collector E: Emitter

<p>TIP122G-Q-TA3-T</p>	<p>(1) Packing Type</p> <p>(2) Package Type</p> <p>(3) Green Package</p>	<p>(1) T: Tube, R: Tape Reel, K: Bulk</p> <p>(2) TA3: TO-220, TN3: TO-252, T60: TO-126</p> <p>(3) G: Halogen Free and Lead Free, L: Lead Free</p>
------------------------	--	---

■ MARKING

TO-220 / TO-252	TO-126



■ ABSOLUTE MAXIMUM RATINGS ($T_A=25^\circ\text{C}$, unless otherwise specified)

PARAMETER		SYMBOL	RATINGS	UNIT
Collector to Base Voltage		V_{CBO}	100	V
Collector to Emitter Voltage		V_{CEO}	100	V
Emitter to Base Voltage		V_{EBO}	5	V
IC Collector Current		I_C	5	A
Power Dissipation ($T_C=25^\circ\text{C}$)	TO-220	P_D	65	W
	TO-252		38	W
	TO-126		10	W
Junction Temperature		T_J	+150	$^\circ\text{C}$
Storage Temperature		T_{STG}	-55 ~ +150	$^\circ\text{C}$

Note: Absolute maximum ratings are those values beyond which the device could be permanently damaged. Absolute maximum ratings are stress ratings only and functional device operation is not implied.

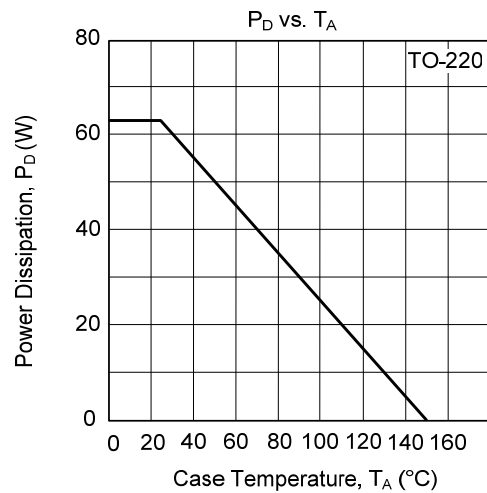
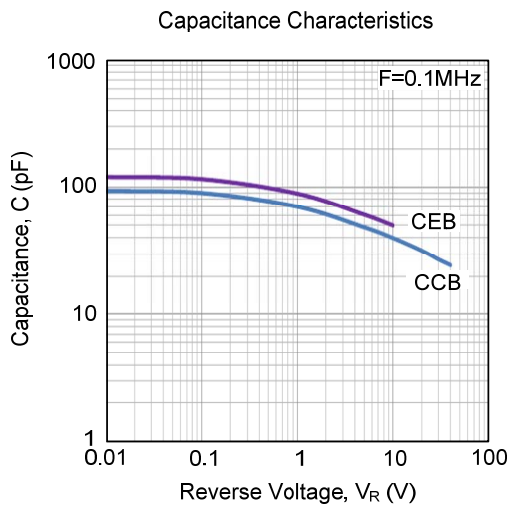
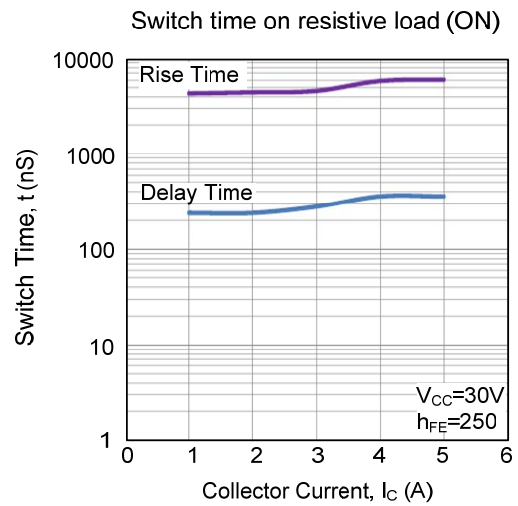
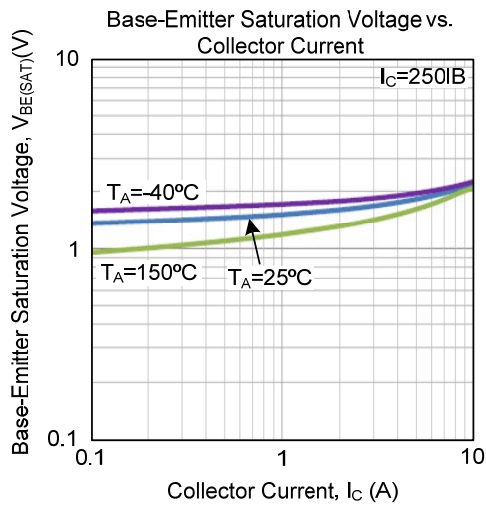
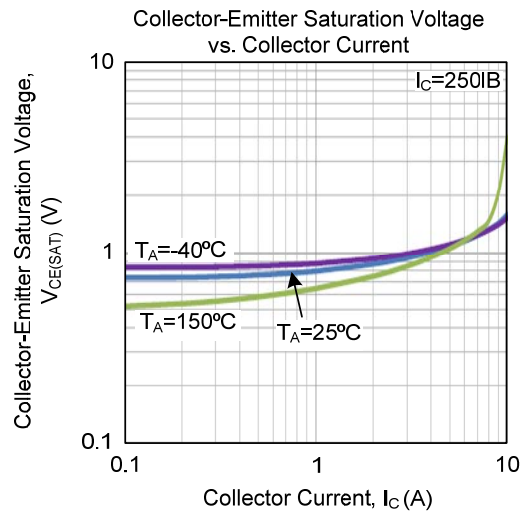
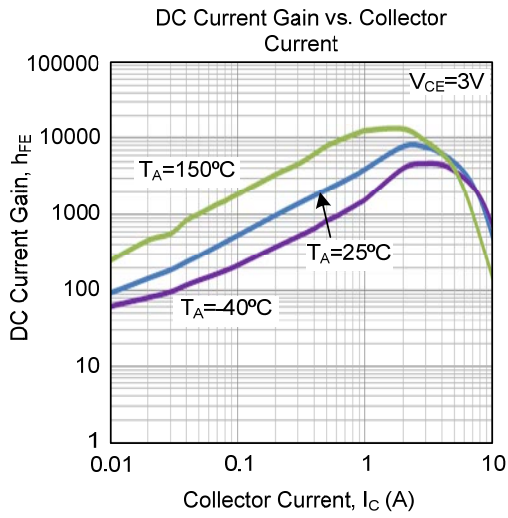
■ THERMAL DATA

PARAMETER		SYMBOL	RATING	UNIT
Junction to Ambient	TO-220	θ_{JA}	62.5	$^\circ\text{C/W}$
	TO-252		80	$^\circ\text{C/W}$
	TO-126		89	$^\circ\text{C/W}$
Junction to Case	TO-220	θ_{JC}	1.92	$^\circ\text{C/W}$
	TO-252		3.29	$^\circ\text{C/W}$
	TO-126		12.5	$^\circ\text{C/W}$

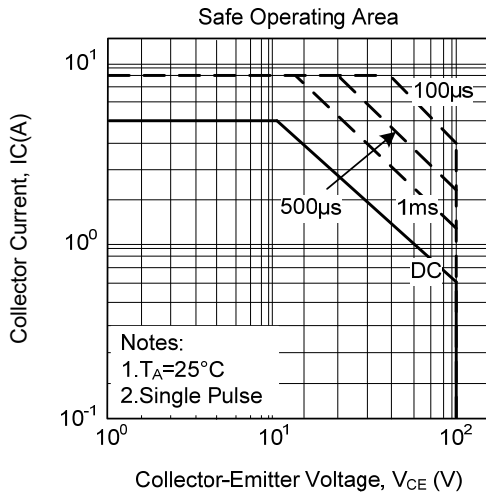
■ ELECTRICAL CHARACTERISTICS ($T_A=25^\circ\text{C}$, unless otherwise specified)

PARAMETER	SYMBOL	TEST CONDITIONS	MIN	TYP	MAX	UNIT
Collector-Emitter Breakdown Voltage	BV_{CEO}	$I_C=100\text{mA}$	100			V
Collector-Emitter Saturation Voltage	$V_{CE(SAT)1}$	$I_C=3\text{A}, I_B=12\text{mA}$			2	V
Collector-Emitter Saturation Voltage	$V_{CE(SAT)2}$	$I_C=5\text{A}, I_B=20\text{mA}$			4	V
Base-Emitter Saturation Voltage	$V_{BE(ON)}$	$V_{CE}=3\text{V}, I_C=3\text{A}$			2.5	V
Collector Cut-Off Current	I_{CBO}	$V_{CB}=100\text{V}$			200	μA
Collector-Cut-Off Current	I_{CEO}	$V_{CE}=50\text{V}$			500	μA
Emitter Cut-Off Current	I_{EBO}	$V_{EB}=5\text{V}$			2	mA
DC Current Gain	h_{FE}	$I_C=500\text{mA}, V_{CE}=3\text{V}$	1000			
		$I_C=3\text{A}, V_{CE}=3\text{V}$	1000			

TYPICAL CHARACTERISTICS



■ TYPICAL CHARACTERISTICS



UTC assumes no responsibility for equipment failures that result from using products at values that exceed, even momentarily, rated values (such as maximum ratings, operating condition ranges, or other parameters) listed in products specifications of any and all UTC products described or contained herein. UTC products are not designed for use in life support appliances, devices or systems where malfunction of these products can be reasonably expected to result in personal injury. Reproduction in whole or in part is prohibited without the prior written consent of the copyright owner. UTC reserves the right to make changes to information published in this document, including without limitation specifications and product descriptions, at any time and without notice. This document supersedes and replaces all information supplied prior to the publication hereof.