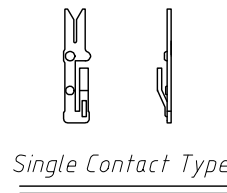
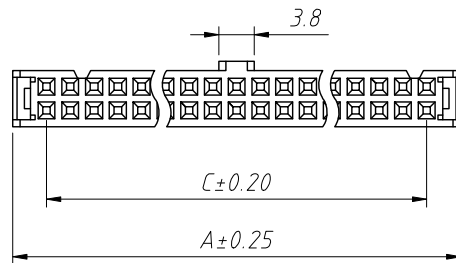
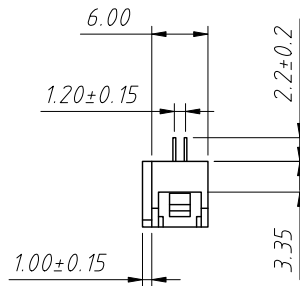
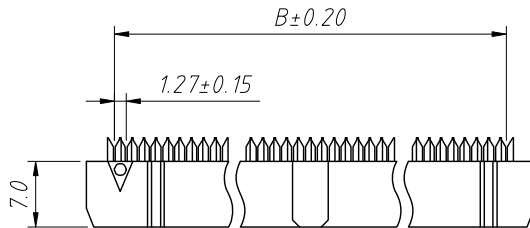
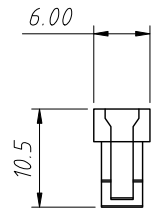
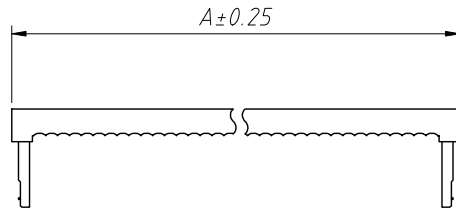
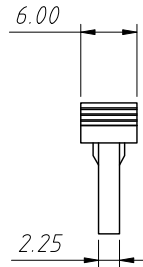
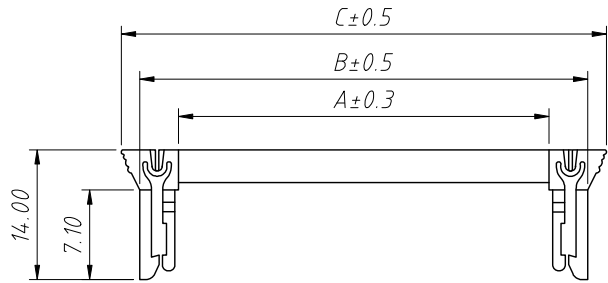


RoHS Compliance



06P~64P

Body+Cover

Pin	Dimension mm		
	A	B	C
06	12.32	6.35	5.08
08	14.86	8.89	7.62
10	17.40	11.43	10.16
12	19.94	13.97	12.70
14	22.48	16.51	15.24
16	25.02	19.05	17.78
18	27.56	21.59	20.32
20	30.10	24.13	22.86
24	35.18	29.21	27.94
26	37.72	31.75	30.48
28	40.26	34.29	33.02
30	42.80	36.83	35.56
34	47.88	41.91	40.64
36	50.42	44.45	43.18
40	55.50	49.53	48.26
44	60.58	54.61	53.34
50	68.20	62.23	60.96
60	80.90	74.93	73.66
64	85.98	80.01	78.74

Material:

Housing: PBT,UL94V-0

Contacts:Brass

Plating: Au or Sn over Ni

Electrical Characteristics:

Current Rating:3.0 AMP

Insulator Resistance:1000MΩ min.

Contact Resistance: 20mΩ max.

Withstand Voltage: 1000V AC / Minute

Operating Temperature: -40°C~+105°C

Max.Processing Temp:180°C for 30-60 seconds
(200°C for 10 seconds)

Note:

6P Without Slot "M" and "N"

8P~12P With Slot "M", Without Slot "N"

14P~64P With Slot "M" and "N"

Order Information:

L-KLS1-204-XX-B-HDK

L: RoHS

IDC connectors

2.54mm Pitch

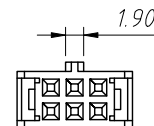
XX-No.of 06~64pin

Color: B=Black

Type:With Butterfly Hook

With Butterfly Hook

Pin	Dimension mm		
	A	B	C
06	8.02	17.00	21.40
08	10.56	19.54	23.94
10	13.10	22.08	26.48
12	15.64	24.62	29.02
14	18.18	27.16	31.56
16	20.72	29.70	34.10
18	23.26	32.24	36.64
20	25.80	34.78	39.18
24	30.88	39.86	44.26
26	33.42	42.40	46.80
30	38.50	47.48	51.88
34	43.58	52.56	56.96
40	51.20	60.18	64.58
50	63.9	72.88	77.28



06P~08P

ANGLE TOLERANCE	PROJECTION	Description:	
±3°		2.54mm Pitch IDC Connector With Butterfly Hook	
GENERAL TOLERANCE	UNITS	mm	KLS P/N:
x.x ±0.30	SHEET SIZE	A4	L-KLS1-204-XX-B-HDK
x.xx ±0.20	Draw:	Daniel	2023-03-06
x.xxx ±0.10	Check:	Daniel	2023-03-06



NingBo KLS ELECTRONIC CO.,L TD.