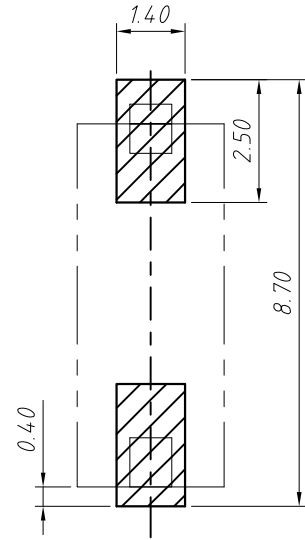
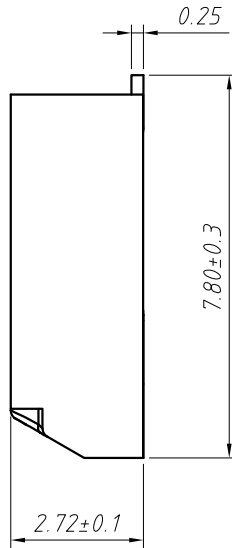
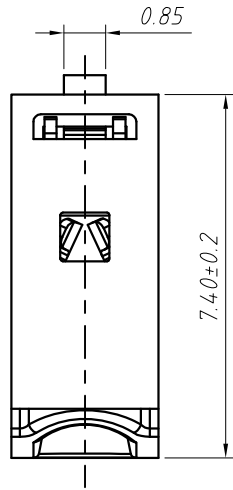
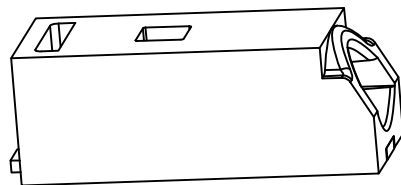
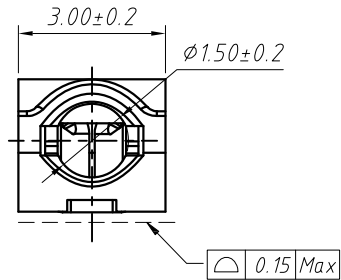


1 RoHS Compliant



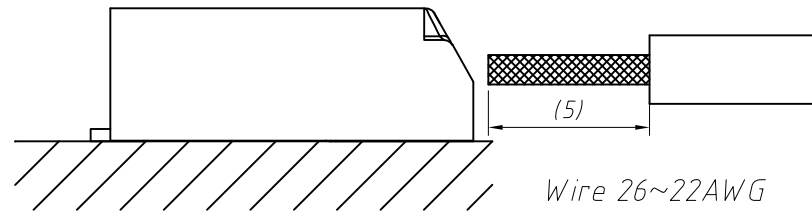
Board Layout




MATERIAL  
Housing:LCP,UL 94V-0,Beige  
Contact:Phosphor Bronze,Matle Sn

Main Specifications  
Poles:01P  
Contact Resistance:≤20mΩ  
Insulation Resistance:≥800MΩ  
Rated Voltage:275V AC DC  
Rated Current:2.0A AC DC  
Withstanding Voltage:800V AC/minute  
Temperature Range: -40 °C ~ +110 °C

Order Information  
L-KLS2-L83-01P  
Number of poles  
Series No.  
RoHS



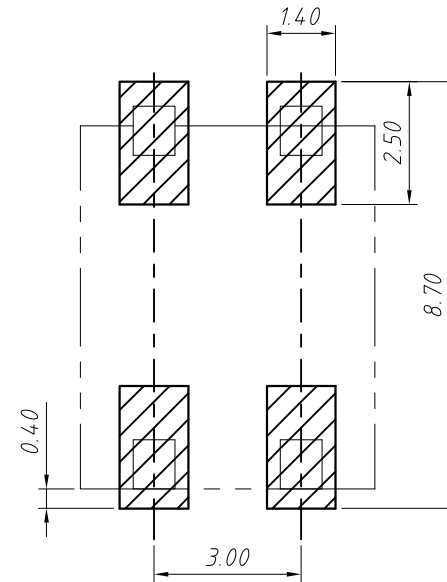
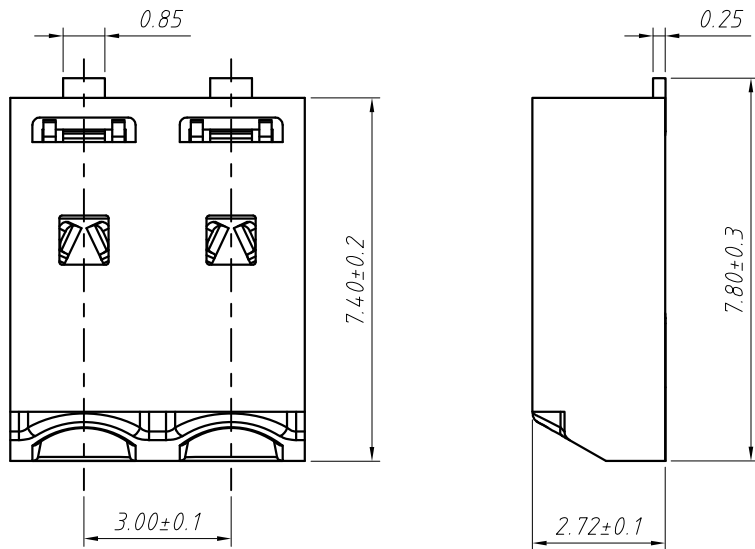
GENERAL TOLERANCE		ANGLE TOLERANCE		PROJECTION	Description:
X. ±0.15	.X ±0.03	.X ±5°	.X ±3°	UNITS	Push-in CAGE type,SMD 3.00mm L-KLS2-L83-01P
.XX ±0.05	.XX ±2°			SHEET SIZE	
				KLS P/N:	
Draw by:	Jenny	Date:	2018-03-10	 NingBo KLS ELECTRONIC CO.,L TD.	
Check by:		Date:	2018-03-10		
SCALE		SHEET	1 OF 1		

1 RoHS Compliant

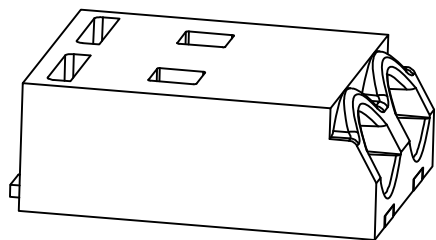
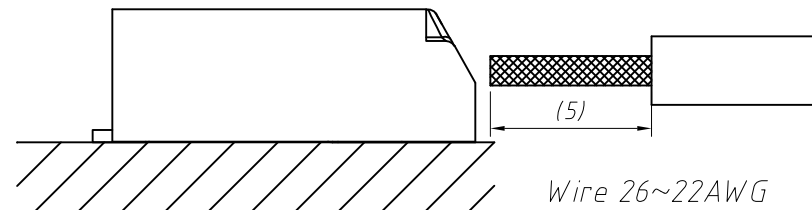
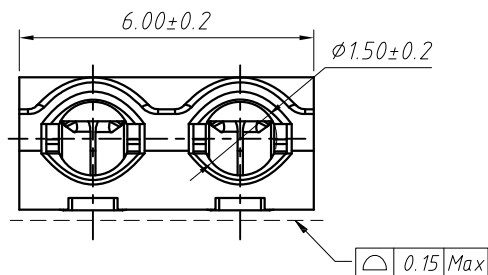
MATERIAL  
Housing:LCP,UL 94V-0,Beige  
Contact:Phosphor Bronze,Matle Sn


Main Specifications  
Poles:02P  
Contact Resistance: $\leq 20m\Omega$   
Insulation Resistance: $\geq 800M\Omega$   
Rated Voltage:275V AC DC  
Rated Current:2.0A AC DC  
Withstanding Voltage:800V AC/minute  
Temperature Range:  $-40^{\circ}C \sim +110^{\circ}C$

Order Information  
L-KLS2-L83-02P  
Number of poles  
Series No.  
RoHS



Board Layout



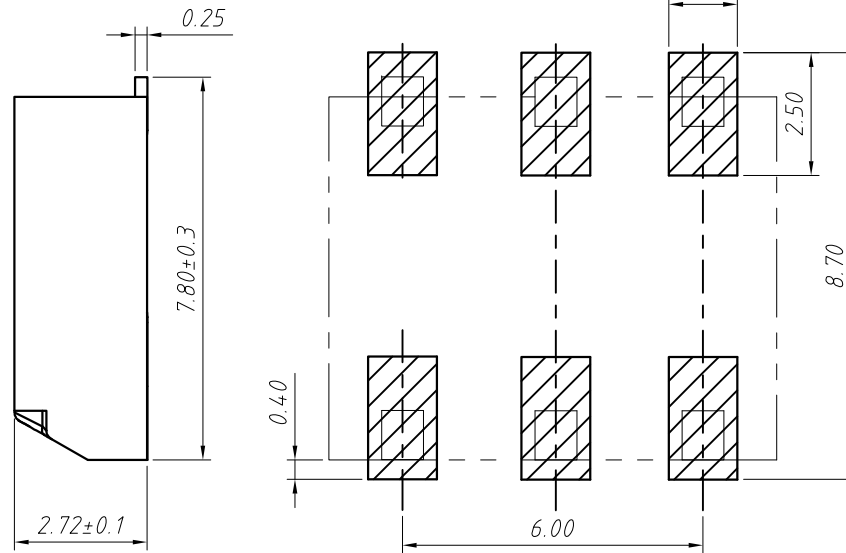
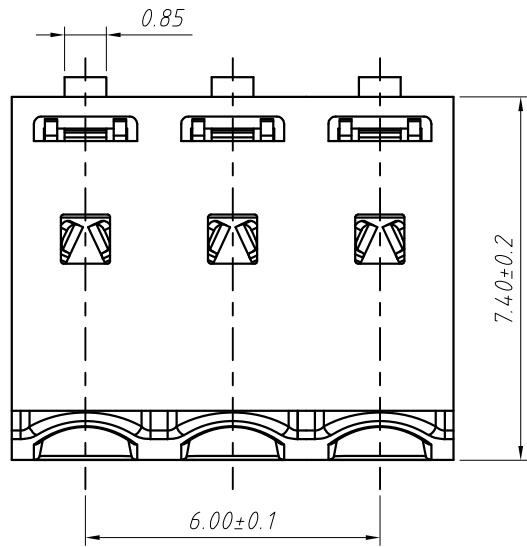
GENERAL TOLERANCE		ANGLE TOLERANCE		PROJECTION		Description:	
.X	$\pm 0.15$	.X	$\pm 5^{\circ}$	UNITS	mm	Push-in CAGE type,SMD 3.00mm L-KLS2-L83-02P	
.X	$\pm 0.03$	.X	$\pm 3^{\circ}$	SHEET SIZE	A4		
.XX	$\pm 0.05$	.XX	$\pm 2^{\circ}$	KLS P/N:			
Draw by:	Jenny	Date:	2018-03-10	 NingBo KLS ELECTRONIC CO.,L TD.			
Check by:		Date:	2018-03-10				
SCALE		SHEET	1	OF	1		

1 RoHS Compliant

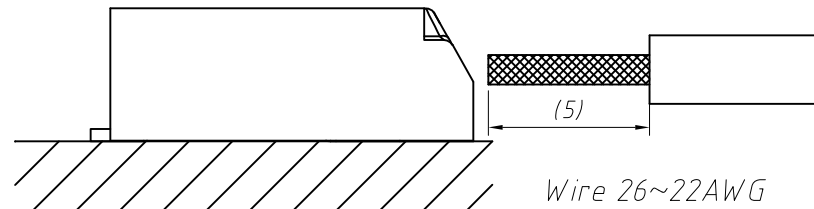
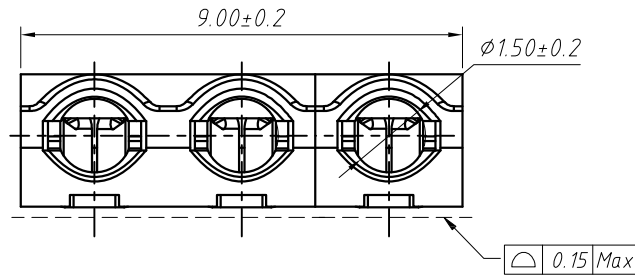
MATERIAL  
Housing:LCP,UL 94V-0,Beige  
Contact:Phosphor Bronze,Matle Sn


Main Specifications  
Poles:03P  
Contact Resistance: $\leq 20m\Omega$   
Insulation Resistance: $\geq 800M\Omega$   
Rated Voltage:275V AC DC  
Rated Current:2.0A AC DC  
Withstanding Voltage:800V AC/minute  
Temperature Range:  $-40^{\circ}C \sim +110^{\circ}C$

Order Information  
L-KLS2-L83-03P  
Number of poles  
Series No.  
RoHS



Board Layout



GENERAL TOLERANCE		ANGLE TOLERANCE		PROJECTION	Description:
.X	$\pm 0.15$	.X	$\pm 5^{\circ}$	UNITS	mm
.X	$\pm 0.03$	.X	$\pm 3^{\circ}$	SHEET SIZE	A4
.XX	$\pm 0.05$	.XX	$\pm 2^{\circ}$	KLS P/N:	L-KLS2-L83-03P
Draw by:	Jenny	Date:	2018-03-10		NingBo KLS ELECTRONIC CO.,L TD.
Check by:		Date:	2018-03-10		
SCALE		SHEET	1 OF 1		

Push-in CAGE type,SMD 3.00mm

L-KLS2-L83-03P

 NingBo KLS ELECTRONIC CO.,L TD.